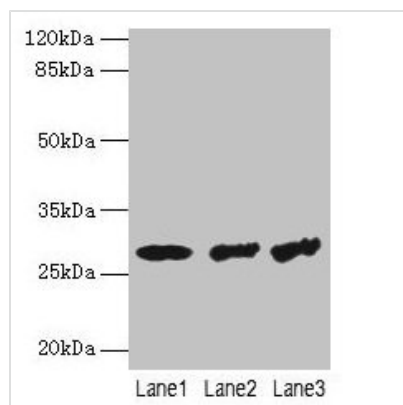




TBCB Antibody

Product Code	CSB-PA03169A0Rb
Storage	Upon receipt, store at -20°C or -80°C. Avoid repeated freeze.
Uniprot No.	Q99426
Immunogen	Recombinant Human Tubulin-folding cofactor B protein (1-244AA)
Raised In	Rabbit
Species Reactivity	Human
Tested Applications	ELISA, WB, IHC, IF, IP; Recommended dilution: WB:1:1000-1:5000, IHC:1:20-1:200, IF:1:50-1:200, IP:1:200-1:2000
Form	Liquid
Conjugate	Non-conjugated
Storage Buffer	Preservative: 0.03% Proclin 300 Constituents: 50% Glycerol, 0.01M PBS, PH 7.4
Purification Method	>95%, Protein G purified
Isotype	IgG
Clonality	Polyclonal
Alias	Tubulin-folding cofactor B (Cytoskeleton-associated protein 1) (Cytoskeleton-associated protein CKAP1) (Tubulin-specific chaperone B), TBCB, CG22 CKAP1
Immunogen Species	Homo sapiens (Human)
Research Area	Signal Transduction
Target Names	TBCB

Image



Western blot

All lanes: TBCB antibody at 4μg/ml

Lane 1: Hela whole cell lysate

Lane 2: A549 whole cell lysate

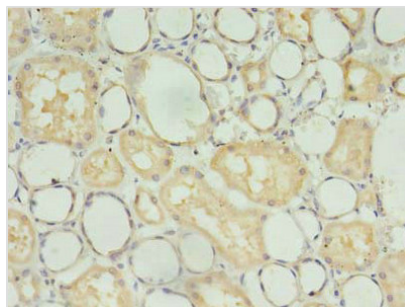
Lane 3: Jurkat whole cell lysate

Secondary

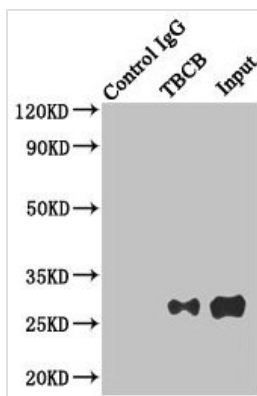
Goat polyclonal to rabbit IgG at 1/10000 dilution

Predicted band size: 28, 22 kDa

Observed band size: 28 kDa



Immunohistochemistry of paraffin-embedded human kidney tissue using CSB-PA03169A0Rb at dilution of 1:100

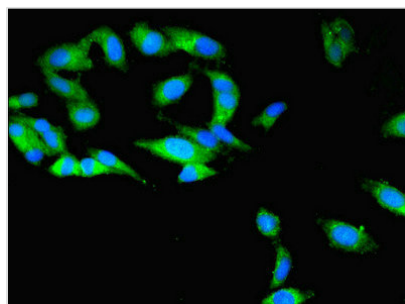


Immunoprecipitating TBCB in Hela whole cell lysate

Lane 1: Rabbit control IgG instead of (1μg) instead of CSB-PA03169A0Rb in Hela whole cell lysate. For western blotting, a HRP-conjugated anti-rabbit IgG, specific to the non-reduced form of IgG was used as the Secondary antibody (1/50000)

Lane 2: CSB-PA03169A0Rb (4μg) + Hela whole cell lysate (500μg)

Lane 3: Hela whole cell lysate (20μg)



Immunofluorescent analysis of Hela cells using CSB-PA03169A0Rb at dilution of 1:100 and Alexa Fluor 488-conjugated AffiniPure Goat Anti-Rabbit IgG(H+L)