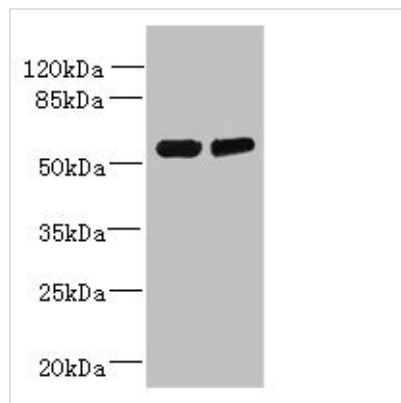




TCTE1 Antibody

Product Code	CSB-PA689339LA01HU
Storage	Upon receipt, store at -20°C or -80°C. Avoid repeated freeze.
Uniprot No.	Q5JU00
Immunogen	Recombinant Human Dynein regulatory complex subunit 5 protein (285-501AA)
Raised In	Rabbit
Species Reactivity	Human, Mouse
Tested Applications	ELISA, WB, IHC, IF; Recommended dilution: WB:1:500-1:2000, IHC:1:20-1:200, IF:1:50-1:200
Form	Liquid
Conjugate	Non-conjugated
Storage Buffer	Preservative: 0.03% Proclin 300 Constituents: 50% Glycerol, 0.01M PBS, PH 7.4
Purification Method	>95%, Protein G purified
Isotype	IgG
Clonality	Polyclonal
Alias	Dynein regulatory complex subunit 5, (T-complex-associated testis-expressed protein 1) (Tcte-1), TCTE1, DRC5
Immunogen Species	Homo sapiens (Human)
Research Area	Others
Target Names	TCTE1

Image



Western blot

All lanes: TCTE1 antibody at 3µg/ml

Lane 1: U251 whole cell lysate

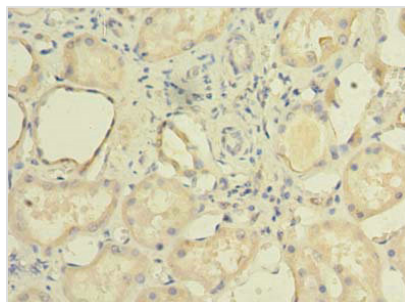
Lane 2: Mouse brain tissue

Secondary

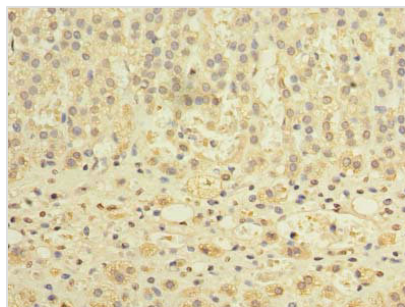
Goat polyclonal to rabbit IgG at 1/10000 dilution

Predicted band size: 56 kDa

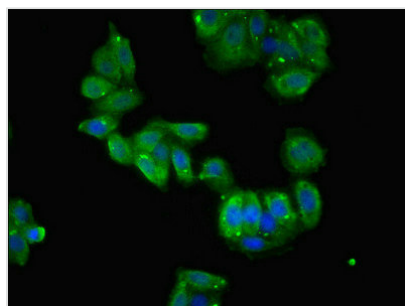
Observed band size: 56 kDa



Immunohistochemistry of paraffin-embedded human kidney tissue using CSB-PA689339LA01HU at dilution of 1:100



Immunohistochemistry of paraffin-embedded human adrenal gland tissue using CSB-PA689339LA01HU at dilution of 1:100



Immunofluorescent analysis of HepG2 cells using CSB-PA689339LA01HU at dilution of 1:100 and Alexa Fluor 488-conjugated AffiniPure Goat Anti-Rabbit IgG(H+L)

Usage

For Research Use Only. Not for use in diagnostic or therapeutic procedures.