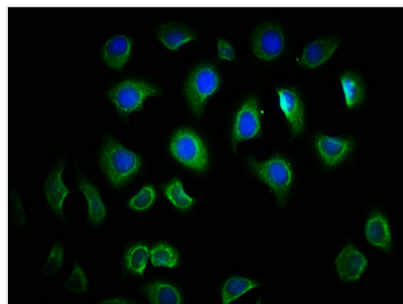




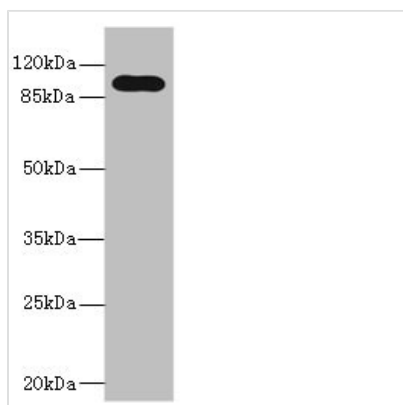
TLR6 Antibody

Product Code	CSB-PA023605LA01HU
Storage	Upon receipt, store at -20°C or -80°C. Avoid repeated freeze.
Uniprot No.	Q9Y2C9
Immunogen	Recombinant Human Toll-like receptor 6 protein (32-586AA)
Raised In	Rabbit
Species Reactivity	Human
Tested Applications	ELISA, WB, IHC, IF; Recommended dilution: WB:1:500-1:2000, IHC:1:20-1:200, IF:1:50-1:200
Form	Liquid
Conjugate	Non-conjugated
Storage Buffer	Preservative: 0.03% Proclin 300 Constituents: 50% Glycerol, 0.01M PBS, PH 7.4
Purification Method	>95%, Protein G purified
Isotype	IgG
Clonality	Polyclonal
Alias	Toll-like receptor 6 (CD antigen CD286), TLR6
Immunogen Species	Homo sapiens (Human)
Research Area	Immunology
Target Names	TLR6

Image



Immunofluorescence staining of A549 cells with CSB-PA023605LA01HU at 1:166, counter-stained with DAPI. The cells were fixed in 4% formaldehyde, permeabilized using 0.2% Triton X-100 and blocked in 10% normal Goat Serum. The cells were then incubated with the antibody overnight at 4°C. The secondary antibody was Alexa Fluor 488-conjugated AffiniPure Goat Anti-Rabbit IgG(H+L).



Western blot

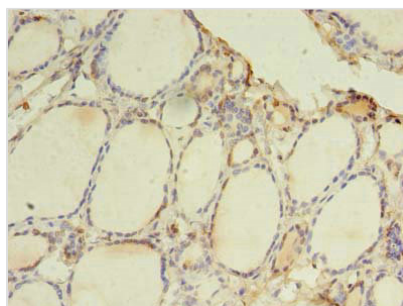
All lanes: TLR6 antibody at 5 μ g/ml + Jurkat whole cell lysate

Secondary

Goat polyclonal to rabbit IgG at 1/10000 dilution

Predicted band size: 92, 56 kDa

Observed band size: 92 kDa



Immunohistochemistry of paraffin-embedded human thyroid tissue using CSB-

PA023605LA01HU at dilution of 1:100