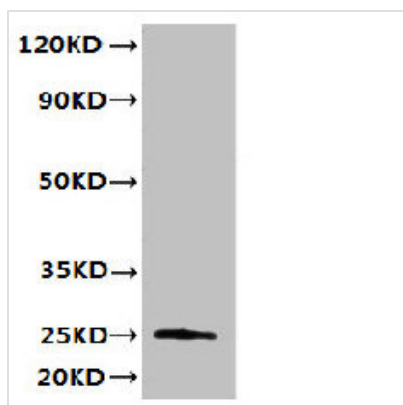




TMED3 Antibody

| | |
|----------------------------|---|
| Product Code | CSB-PA897107LA01HU |
| Storage | Upon receipt, store at -20°C or -80°C. Avoid repeated freeze. |
| Uniprot No. | Q9Y3Q3 |
| Immunogen | Recombinant Human Transmembrane emp24 domain-containing protein 3 protein (24-180AA) |
| Raised In | Rabbit |
| Species Reactivity | Human |
| Tested Applications | ELISA, WB, IHC; Recommended dilution: WB:1:500-1:2000, IHC:1:20-1:200 |
| Form | Liquid |
| Conjugate | Non-conjugated |
| Storage Buffer | Preservative: 0.03% Proclin 300 Constituents: 50% Glycerol, 0.01M PBS, PH 7.4 |
| Purification Method | >95%, Protein G purified |
| Isotype | IgG |
| Clonality | Polyclonal |
| Alias | Transmembrane emp24 domain-containing protein 3 (Membrane protein p24B) (p24 family protein gamma-4) (p24gamma4) (p26), TMED3, C15orf22 |
| Immunogen Species | Homo sapiens (Human) |
| Research Area | Signal Transduction |
| Target Names | TMED3 |

Image



Western blot

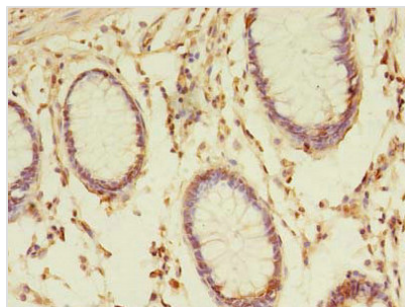
All lanes: TMED3 antibody at 6µg/ml + MCF-7 whole cell lysate

Secondary

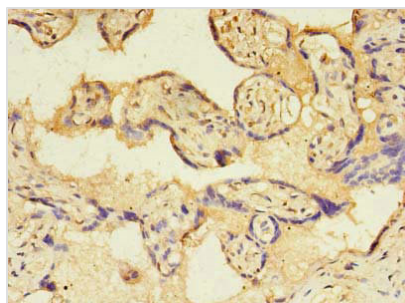
Goat polyclonal to rabbit IgG at 1/10000 dilution

Predicted band size: 25, 20 kDa

Observed band size: 25 kDa



Immunohistochemistry of paraffin-embedded human colon cancer using CSB-PA897107LA01HU at dilution of 1:100



Immunohistochemistry of paraffin-embedded human placenta tissue using CSB-PA897107LA01HU at dilution of 1:100

Usage

For Research Use Only. Not for use in diagnostic or therapeutic procedures.