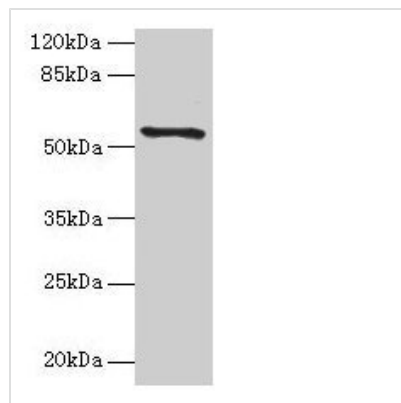




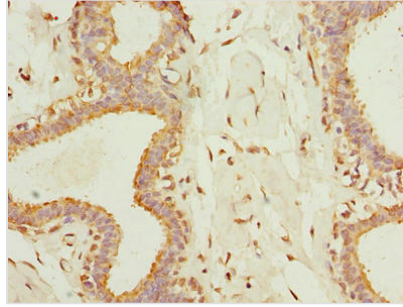
TMEM161A Antibody

Product Code	CSB-PA023735LA01HU
Storage	Upon receipt, store at -20°C or -80°C. Avoid repeated freeze.
Uniprot No.	Q9NX61
Immunogen	Recombinant Human Transmembrane protein 161A protein (29-98AA)
Raised In	Rabbit
Species Reactivity	Human
Tested Applications	ELISA, WB, IHC, IF; Recommended dilution: WB:1:500-1:5000, IHC:1:20-1:200, IF:1:50-1:200
Form	Liquid
Conjugate	Non-conjugated
Storage Buffer	Preservative: 0.03% Proclin 300 Constituents: 50% Glycerol, 0.01M PBS, PH 7.4
Purification Method	Antigen Affinity Purified
Isotype	IgG
Clonality	Polyclonal
Alias	Transmembrane protein 161A (Adaptive response to oxidative stress protein 29) (AROS-29), TMEM161A
Immunogen Species	Homo sapiens (Human)
Research Area	Cell Biology
Target Names	TMEM161A

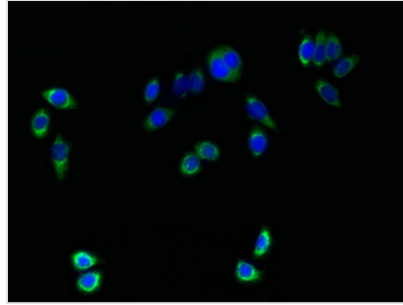
Image



Western blot
 All lanes: TMEM161A antibody at 1µg/ml + PC-3 whole cell lysate
 Secondary
 Goat polyclonal to rabbit IgG at 1/10000 dilution
 Predicted band size: 54, 42 kDa
 Observed band size: 54 kDa



Immunohistochemistry of paraffin-embedded human breast cancer using CSB-PA023735LA01HU at dilution of 1:100



Immunofluorescent analysis of PC-3 cells using CSB-PA023735LA01HU at dilution of 1:100 and Alexa Fluor 488-conjugated AffiniPure Goat Anti-Rabbit IgG(H+L)

Usage

For Research Use Only. Not for use in diagnostic or therapeutic procedures.