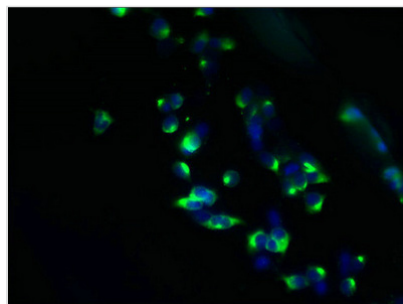




TMEM63A Antibody

Product Code	CSB-PA023865LA01HU
Storage	Upon receipt, store at -20°C or -80°C. Avoid repeated freeze.
Uniprot No.	O94886
Immunogen	Recombinant Human CSC1-like protein 1 protein (212-420AA)
Raised In	Rabbit
Species Reactivity	Human
Tested Applications	ELISA, IF; Recommended dilution: IF:1:50-1:200
Form	Liquid
Conjugate	Non-conjugated
Storage Buffer	Preservative: 0.03% Proclin 300 Constituents: 50% Glycerol, 0.01M PBS, PH 7.4
Purification Method	>95%, Protein G purified
Isotype	IgG
Clonality	Polyclonal
Alias	CSC1-like protein 1 (Transmembrane protein 63A), TMEM63A, KIAA0489 KIAA0792
Immunogen Species	Homo sapiens (Human)
Research Area	Cell Biology
Target Names	TMEM63A

Image



Immunofluorescent analysis of 293T cells using CSB-PA023865LA01HU at dilution of 1:100 and Alexa Fluor 488-conjugated AffiniPure Goat Anti-Rabbit IgG(H+L)

Usage

For Research Use Only. Not for use in diagnostic or therapeutic procedures.