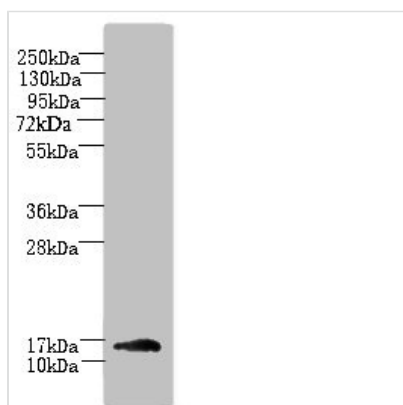




TRAPPC2L Antibody

Product Code	CSB-PA892461LA01HU
Storage	Upon receipt, store at -20°C or -80°C. Avoid repeated freeze.
Uniprot No.	Q9UL33
Immunogen	Recombinant Human Trafficking protein particle complex subunit 2-like protein (1-139AA)
Raised In	Rabbit
Species Reactivity	Human, Mouse
Tested Applications	ELISA, WB, IHC; Recommended dilution: WB:1:500-1:2000, IHC:1:20-1:200
Form	Liquid
Conjugate	Non-conjugated
Storage Buffer	Preservative: 0.03% Proclin 300 Constituents: 50% Glycerol, 0.01M PBS, PH 7.4
Purification Method	>95%, Protein G purified
Isotype	IgG
Clonality	Polyclonal
Alias	Trafficking protein particle complex subunit 2-like protein, TRAPPC2L
Immunogen Species	Homo sapiens (Human)
Research Area	Signal Transduction
Target Names	TRAPPC2L

Image



Western blot

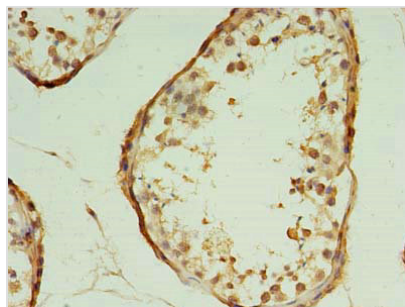
All lanes: TRAPPC2L antibody at 5µg/ml +
Mouse kidney tissue

Secondary

Goat polyclonal to rabbit IgG at 1/10000 dilution

Predicted band size: 16 kDa

Observed band size: 16 kDa



Immunohistochemistry of paraffin-embedded human testis tissue using CSB-PA892461LA01HU at dilution of 1:100

Usage

For Research Use Only. Not for use in diagnostic or therapeutic procedures.