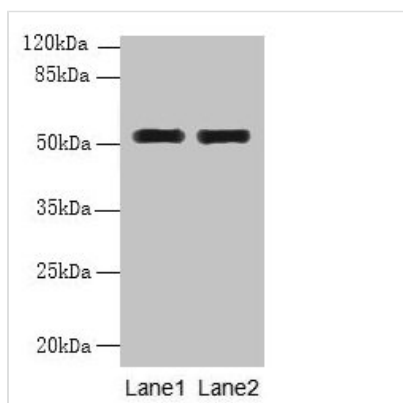




WDR88 Antibody

Product Code	CSB-PA744395LA01HU
Storage	Upon receipt, store at -20°C or -80°C. Avoid repeated freeze.
Uniprot No.	Q6ZMY6
Immunogen	Recombinant Human WD repeat-containing protein 88 protein (1-250AA)
Raised In	Rabbit
Species Reactivity	Human
Tested Applications	ELISA, WB, IHC; Recommended dilution: WB:1:500-1:2000, IHC:1:20-1:200
Form	Liquid
Conjugate	Non-conjugated
Storage Buffer	Preservative: 0.03% Proclin 300 Constituents: 50% Glycerol, 0.01M PBS, PH 7.4
Purification Method	>95%, Protein G purified
Isotype	IgG
Clonality	Polyclonal
Alias	WD repeat-containing protein 88 (PQQ repeat and WD repeat-containing protein), WDR88, PQWD
Immunogen Species	Homo sapiens (Human)
Research Area	Cell Biology
Target Names	WDR88

Image



Western blot

All lanes: WDR88 antibody at 6µg/ml

Lane 1: MCF-7 whole cell lysate

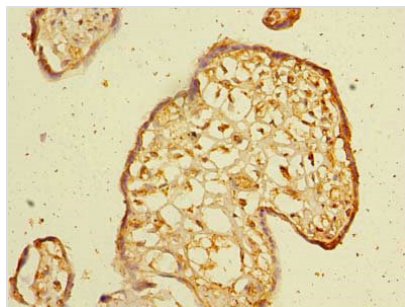
Lane 2: A549 whole cell lysate

Secondary

Goat polyclonal to rabbit IgG at 1/10000 dilution

Predicted band size: 53, 48 kDa

Observed band size: 53 kDa



Immunohistochemistry of paraffin-embedded human placenta tissue using CSB-PA744395LA01HU at dilution of 1:100

Usage

For Research Use Only. Not for use in diagnostic or therapeutic procedures.