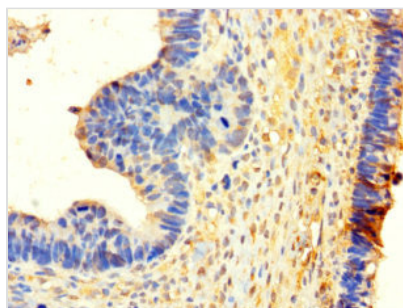




WHSC1L1 Antibody

Product Code	CSB-PA880145LA01HU
Storage	Upon receipt, store at -20°C or -80°C. Avoid repeated freeze.
Uniprot No.	Q9BZ95
Immunogen	Recombinant Human Histone-lysine N-methyltransferase NSD3 protein (1-645AA)
Raised In	Rabbit
Species Reactivity	Human
Tested Applications	ELISA, IHC; Recommended dilution: IHC:1:20-1:200
Form	Liquid
Conjugate	Non-conjugated
Storage Buffer	Preservative: 0.03% Proclin 300 Constituents: 50% Glycerol, 0.01M PBS, PH 7.4
Purification Method	>95%, Protein G purified
Isotype	IgG
Clonality	Polyclonal
Alias	Histone-lysine N-methyltransferase NSD3 (EC 2.1.1.43) (Nuclear SET domain-containing protein 3) (Protein whistle) (WHSC1-like 1 isoform 9 with methyltransferase activity to lysine) (Wolf-Hirschhorn syndrome candidate 1-like protein 1) (WHSC1-like protein 1), NSD3, WHSC1L1
Immunogen Species	Homo sapiens (Human)
Research Area	Epigenetics and Nuclear Signaling
Target Names	NSD3

Image



Immunohistochemistry of paraffin-embedded human ovarian cancer using CSB-PA880145LA01HU at dilution of 1:100