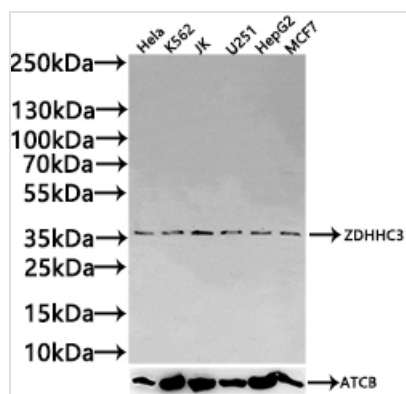




# ZDHHC3 Antibody

<b>Product Code</b>	CSB-PA882141LA01HU
<b>Storage</b>	Upon receipt, store at -20°C or -80°C. Avoid repeated freeze.
<b>Uniprot No.</b>	Q9NYG2
<b>Immunogen</b>	Recombinant Human Palmitoyltransferase ZDHHC3 protein (94-171AA)
<b>Raised In</b>	Rabbit
<b>Species Reactivity</b>	Human
<b>Tested Applications</b>	ELISA, WB, IHC; Recommended dilution: WB:1:500-1:2000, IHC:1:20-1:100
<b>Form</b>	Liquid
<b>Conjugate</b>	Non-conjugated
<b>Storage Buffer</b>	Preservative: 0.03% Proclin 300 Constituents: 50% Glycerol, 0.01M PBS, PH 7.4
<b>Purification Method</b>	>95%, Protein G purified
<b>Isotype</b>	IgG
<b>Clonality</b>	Polyclonal
<b>Product Type</b>	Polyclonal Antibody
<b>Immunogen Species</b>	Homo sapiens (Human)
<b>Research Area</b>	Neuroscience
<b>Target Names</b>	ZDHHC3

## Image



### Western Blot

Positive WB detected in: HeLa whole cell lysate(20µg),K562 whole cell lysate(20µg), JK whole cell lysate(20µg), U251 whole cell lysate(20µg), HepG2 whole cell lysate(20µg), MCF7 whole cell lysate(20µg)

All lanes: ZDHHC3 antibody at 1:1000

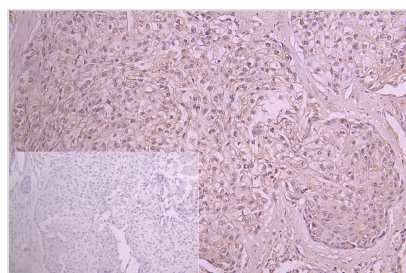
Secondary

Goat polyclonal to rabbit IgG at 1/20000 dilution

Predicted band size: 35,38 kDa

Observed band size: 35 kDa

Exposure time: 60s



IHC image of CSB-PA882141LA01HU diluted at 1:50 and staining in paraffin-embedded human pancreatic cancer performed on a Leica Bond™ system. After dewaxing and hydration, antigen retrieval was mediated by high pressure in a citrate buffer (pH 6.0). Section was blocked with 10% normal goat serum 30min at RT. Then primary antibody (1% BSA) was incubated at 4°C overnight. The primary is detected by a Goat anti-rabbit polymer IgG labeled by HRP and



visualized using 0.05% DAB. Secondary antibody only control: uses 1% BSA instead of primary antibody

---

**Usage**

For Research Use Only. Not for use in diagnostic or therapeutic procedures.