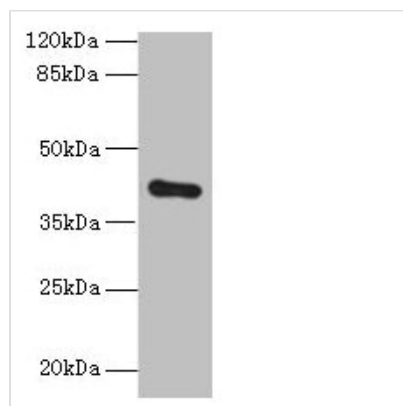




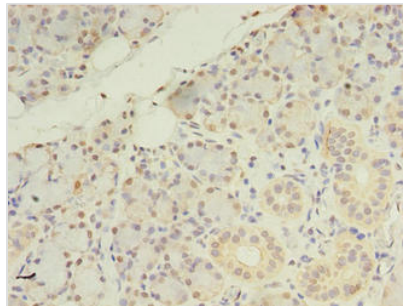
# ZDHHC4 Antibody

<b>Product Code</b>	CSB-PA873612LA01HU
<b>Storage</b>	Upon receipt, store at -20°C or -80°C. Avoid repeated freeze.
<b>Uniprot No.</b>	Q9NPG8
<b>Immunogen</b>	Recombinant Human Probable palmitoyltransferase ZDHHC4 protein (277-344AA)
<b>Raised In</b>	Rabbit
<b>Species Reactivity</b>	Human, Mouse
<b>Tested Applications</b>	ELISA, WB, IHC; Recommended dilution: WB:1:500-1:2000, IHC:1:20-1:200
<b>Form</b>	Liquid
<b>Conjugate</b>	Non-conjugated
<b>Storage Buffer</b>	Preservative: 0.03% Proclin 300 Constituents: 50% Glycerol, 0.01M PBS, PH 7.4
<b>Purification Method</b>	Antigen Affinity Purified
<b>Isotype</b>	IgG
<b>Clonality</b>	Polyclonal
<b>Alias</b>	Probable palmitoyltransferase ZDHHC4 (EC 2.3.1.225) (Zinc finger DHHC domain-containing protein 4) (DHHC-4) (Zinc finger protein 374), ZDHHC4, ZNF374
<b>Immunogen Species</b>	Homo sapiens (Human)
<b>Research Area</b>	Others
<b>Target Names</b>	ZDHHC4

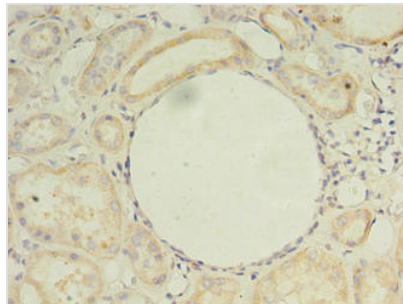
## Image



Western blot  
All lanes: ZDHHC4 antibody at 1.5µg/ml +  
Mouse liver tissue  
Secondary  
Goat polyclonal to rabbit IgG at 1/10000 dilution  
Predicted band size: 40 kDa  
Observed band size: 40 kDa



Immunohistochemistry of paraffin-embedded human pancreatic tissue using CSB-PA873612LA01HU at dilution of 1:100



Immunohistochemistry of paraffin-embedded human kidney tissue using CSB-PA873612LA01HU at dilution of 1:100