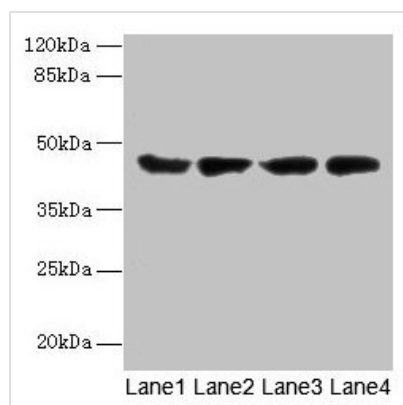




ACTL8 Antibody

Product Code	CSB-PA887982LA01HU
Storage	Upon receipt, store at -20°C or -80°C. Avoid repeated freeze.
Uniprot No.	Q9H568
Immunogen	Recombinant Human Actin-like protein 8 protein (1-366AA)
Raised In	Rabbit
Species Reactivity	Human
Tested Applications	ELISA, WB, IHC; Recommended dilution: WB:1:500-1:2000, IHC:1:20-1:200
Form	Liquid
Conjugate	Non-conjugated
Storage Buffer	Preservative: 0.03% Proclin 300 Constituents: 50% Glycerol, 0.01M PBS, PH 7.4
Purification Method	>95%, Protein G purified
Isotype	IgG
Clonality	Polyclonal
Alias	Actin-like protein 8 (Cancer/testis antigen 57) (CT57), ACTL8
Immunogen Species	Homo sapiens (Human)
Research Area	Signal Transduction
Target Names	ACTL8

Image



Western blot

All lanes: ACTL8 antibody at 5µg/ml

Lane 1: HeLa whole cell lysate

Lane 2: HepG2 whole cell lysate

Lane 3: A549 whole cell lysate

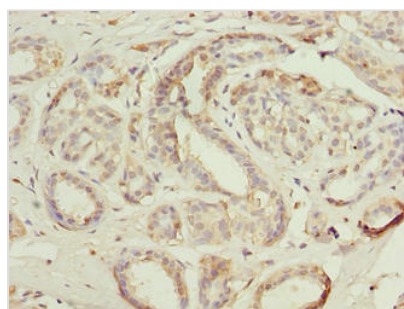
Lane 4: MCF-7 whole cell lysate

Secondary

Goat polyclonal to rabbit IgG at 1/10000 dilution

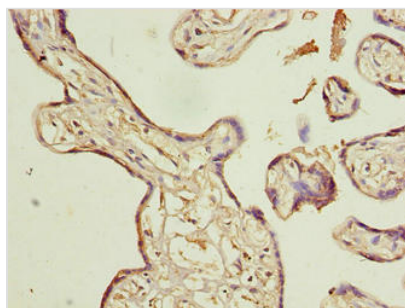
Predicted band size: 42 kDa

Observed band size: 42 kDa



Immunohistochemistry of paraffin-embedded human breast cancer using CSB-

PA887982LA01HU at dilution of 1:100



Immunohistochemistry of paraffin-embedded human placenta tissue using CSB-PA887982LA01HU at dilution of 1:100