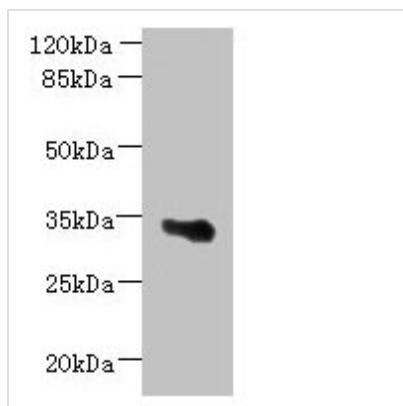




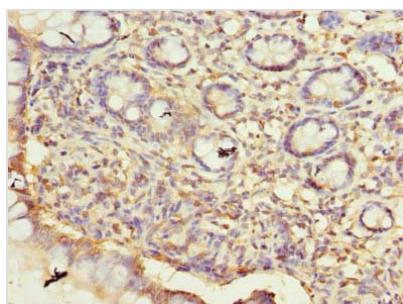
ARMCX6 Antibody

Product Code	CSB-PA765977LA01HU
Storage	Upon receipt, store at -20°C or -80°C. Avoid repeated freeze.
Uniprot No.	Q7L4S7
Immunogen	Recombinant Human Protein ARM CX6 protein (28-300AA)
Raised In	Rabbit
Species Reactivity	Human
Tested Applications	ELISA, WB, IHC; Recommended dilution: WB:1:500-1:2000, IHC:1:20-1:200
Form	Liquid
Conjugate	Non-conjugated
Storage Buffer	Preservative: 0.03% Proclin 300 Constituents: 50% Glycerol, 0.01M PBS, PH 7.4
Purification Method	Antigen Affinity Purified
Isotype	IgG
Clonality	Polyclonal
Alias	Protein ARM CX6, ARM CX6
Immunogen Species	Homo sapiens (Human)
Research Area	Others
Target Names	ARM CX6

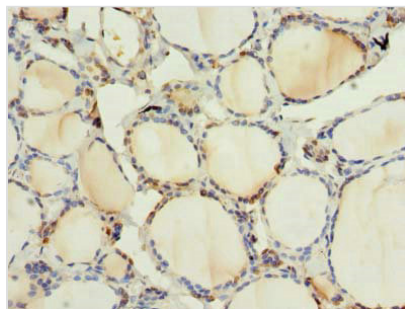
Image



Western blot
All lanes: ARM CX6 antibody at 1.3µg/ml + U251 whole cell lysate
Secondary
Goat polyclonal to rabbit IgG at 1/10000 dilution
Predicted band size: 34 kDa
Observed band size: 34 kDa



Immunohistochemistry of paraffin-embedded human small intestine tissue using CSB-PA765977LA01HU at dilution of 1:100



Immunohistochemistry of paraffin-embedded human thyroid tissue using CSB-PA765977LA01HU at dilution of 1:100

Usage

For Research Use Only. Not for use in diagnostic or therapeutic procedures.