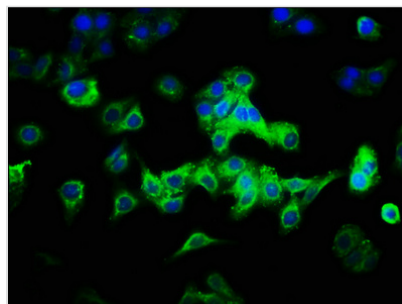




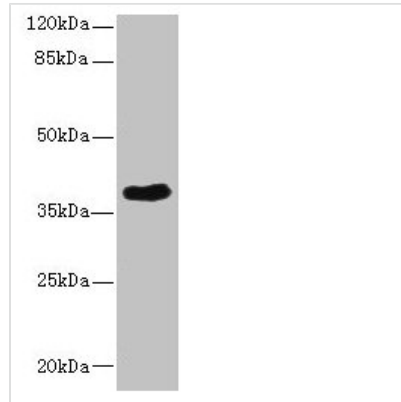
CAB39L Antibody

Product Code	CSB-PA872527LA01HU
Storage	Upon receipt, store at -20°C or -80°C. Avoid repeated freeze.
Uniprot No.	Q9H9S4
Immunogen	Recombinant Human Calcium-binding protein 39-like protein (1-270AA)
Raised In	Rabbit
Species Reactivity	Human
Tested Applications	ELISA, WB, IF; Recommended dilution: WB:1:1000-1:5000, IF:1:200-1:500
Form	Liquid
Conjugate	Non-conjugated
Storage Buffer	Preservative: 0.03% Proclin 300 Constituents: 50% Glycerol, 0.01M PBS, PH 7.4
Purification Method	>95%, Protein G purified
Isotype	IgG
Clonality	Polyclonal
Alias	Calcium-binding protein 39-like (Antigen MLAA-34) (MO25beta) (Mo25-like protein), CAB39L
Immunogen Species	Homo sapiens (Human)
Research Area	Cancer
Target Names	CAB39L

Image



Immunofluorescence staining of HepG2 cells with CSB-PA872527LA01HU at 1:333, counter-stained with DAPI. The cells were fixed in 4% formaldehyde, permeabilized using 0.2% Triton X-100 and blocked in 10% normal Goat Serum. The cells were then incubated with the antibody overnight at 4°C. The secondary antibody was Alexa Fluor 488-conjugated AffiniPure Goat Anti-Rabbit IgG(H+L).



Western blot

All lanes: CAB39L antibody at 10µg/ml + 293T whole cell lysate

Secondary

Goat polyclonal to rabbit IgG at 1/10000 dilution

Predicted band size: 40 kDa

Observed band size: 40 kDa

Usage

For Research Use Only. Not for use in diagnostic or therapeutic procedures.