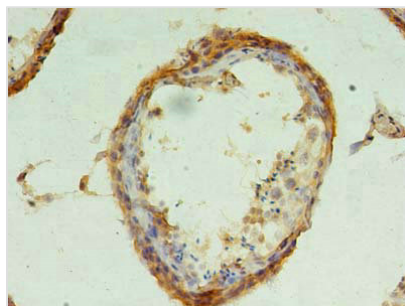




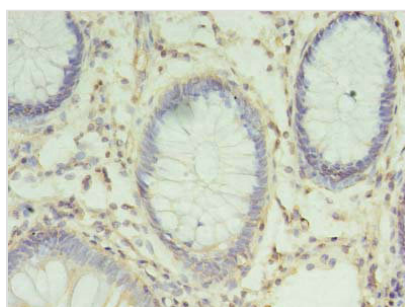
CHMP6 Antibody

Product Code	CSB-PA846622LA01HU
Storage	Upon receipt, store at -20°C or -80°C. Avoid repeated freeze.
Uniprot No.	Q96FZ7
Immunogen	Recombinant Human Charged multivesicular body protein 6 protein (2-201AA)
Raised In	Rabbit
Species Reactivity	Human, Rat
Tested Applications	ELISA, WB, IHC; Recommended dilution: WB:1:500-1:5000, IHC:1:20-1:200
Form	Liquid
Conjugate	Non-conjugated
Storage Buffer	Preservative: 0.03% Proclin 300 Constituents: 50% Glycerol, 0.01M PBS, PH 7.4
Purification Method	>95%, Protein G purified
Isotype	IgG
Clonality	Polyclonal
Alias	Charged multivesicular body protein 6 (Chromatin-modifying protein 6) (Vacuolar protein sorting-associated protein 20) (Vps20) (hVps20), CHMP6, VPS20
Immunogen Species	Homo sapiens (Human)
Research Area	Microbiology
Target Names	CHMP6

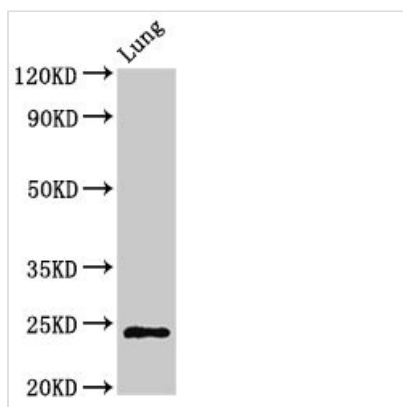
Image



Immunohistochemistry of paraffin-embedded human testis tissue using CSB-PA846622LA01HU at dilution of 1:100



Immunohistochemistry of paraffin-embedded human colon cancer using CSB-PA846622LA01HU at dilution of 1:100

**Western Blot**

Positive WB detected in: Rat lung tissue

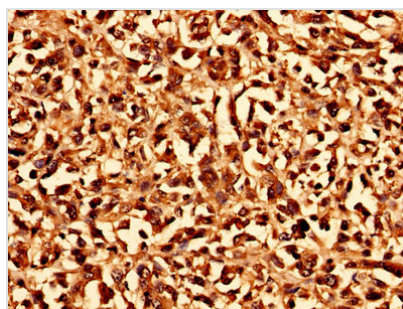
All lanes: CHMP6 antibody at 3 μ g/ml

Secondary

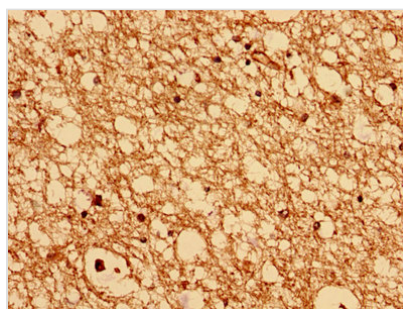
Goat polyclonal to rabbit IgG at 1/50000 dilution

Predicted band size: 24 kDa

Observed band size: 24 kDa



Immunohistochemistry analysis of human melanoma using CSB-PA846622LA01HU at dilution of 1:100



Immunohistochemistry analysis of human brain tissue using CSB-PA846622LA01HU at dilution of 1:100

Usage

For Research Use Only. Not for use in diagnostic or therapeutic procedures.