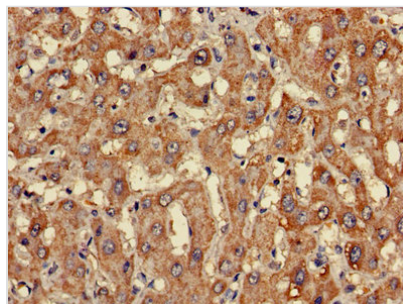




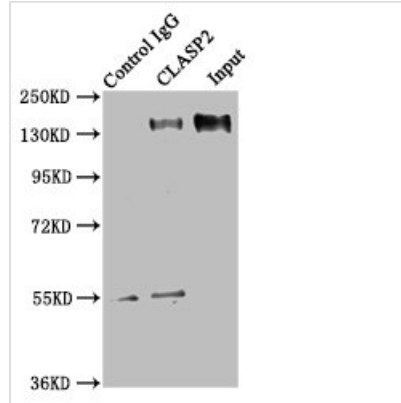
CLASP2 Antibody

| | |
|----------------------------|--|
| Product Code | CSB-PA005472LA01HU |
| Storage | Upon receipt, store at -20°C or -80°C. Avoid repeated freeze. |
| Uniprot No. | O75122 |
| Immunogen | Recombinant Human CLIP-associating protein 2 protein (226-381AA) |
| Raised In | Rabbit |
| Species Reactivity | Human |
| Tested Applications | ELISA, IHC, IP; Recommended dilution: IHC:1:20-1:200, IP:1:200-1:2000 |
| Form | Liquid |
| Conjugate | Non-conjugated |
| Storage Buffer | Preservative: 0.03% Proclin 300 Constituents: 50% Glycerol, 0.01M PBS, PH 7.4 |
| Purification Method | >95%, Protein G purified |
| Isotype | IgG |
| Clonality | Polyclonal |
| Alias | CLIP-associating protein 2 (Cytoplasmic linker-associated protein 2) (Protein Orbit homolog 2) (hOrbit2), CLASP2, KIAA0627 |
| Immunogen Species | Homo sapiens (Human) |
| Research Area | Cell Biology |
| Target Names | CLASP2 |

Image



Immunohistochemistry of paraffin-embedded human liver cancer using CSB-PA005472LA01HU at dilution of 1:100

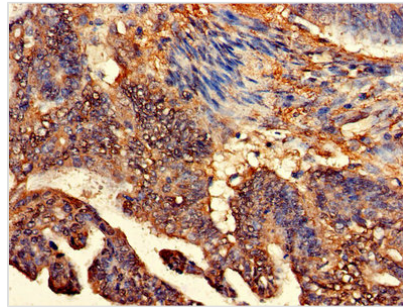


Immunoprecipitating CLASP2 in HEK293 whole cell lysate

Lane 1: Rabbit control IgG instead of CSB-PA005472LA01HU in HEK293 whole cell lysate. For western blotting, a HRP-conjugated Protein G antibody was used as the secondary antibody (1/2000)

Lane 2: CSB-PA005472LA01HU (8 μ g) + HEK293 whole cell lysate (500 μ g)

Lane 3: HEK293 whole cell lysate (10 μ g)



Immunohistochemistry of paraffin-embedded human colon cancer using CSB-PA005472LA01HU at dilution of 1:100

Usage

For Research Use Only. Not for use in diagnostic or therapeutic procedures.