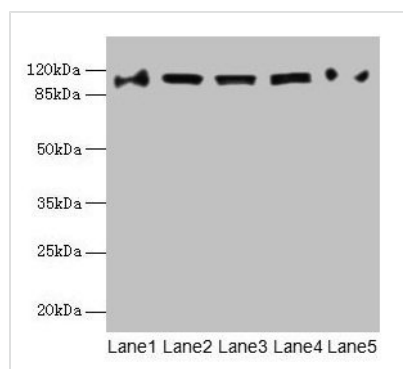




COPB1 Antibody

| | |
|----------------------------|--|
| Product Code | CSB-PA005783LA01HU |
| Storage | Upon receipt, store at -20°C or -80°C. Avoid repeated freeze. |
| Uniprot No. | P53618 |
| Immunogen | Recombinant Human Coatomer subunit beta protein (2-200AA) |
| Raised In | Rabbit |
| Species Reactivity | Human, Mouse |
| Tested Applications | ELISA, WB, IHC; Recommended dilution: WB:1:500-1:2000, IHC:1:20-1:200 |
| Form | Liquid |
| Conjugate | Non-conjugated |
| Storage Buffer | Preservative: 0.03% Proclin 300 Constituents: 50% Glycerol, 0.01M PBS, PH 7.4 |
| Purification Method | Antigen Affinity Purified |
| Isotype | IgG |
| Clonality | Polyclonal |
| Alias | Coatomer subunit beta (Beta-coat protein) (Beta-COP), COPB1, COPB |
| Immunogen Species | Homo sapiens (Human) |
| Research Area | Others |
| Target Names | COPB1 |

Image



Western blot

All lanes: COPB1 antibody at 1µg/ml

Lane 1: Hela whole cell lysate

Lane 2: Jurkat whole cell lysate

Lane 3: NIH/3T3 whole cell lysate

Lane 4: Mouse liver tissue

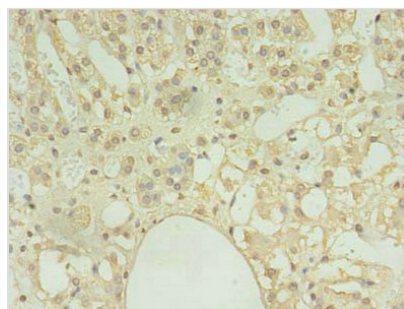
Lane 5: A549 whole cell lysate

Secondary

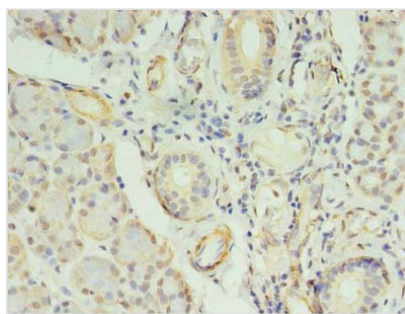
Goat polyclonal to rabbit IgG at 1/10000 dilution

Predicted band size: 108 kDa

Observed band size: 108 kDa



Immunohistochemistry of paraffin-embedded human adrenal gland tissue using CSB-PA005783LA01HU at dilution of 1:100



Immunohistochemistry of paraffin-embedded human pancreatic tissue using CSB-PA005783LA01HU at dilution of 1:100