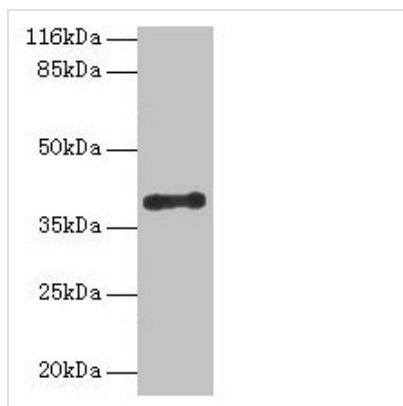




CYLC2 Antibody

Product Code	CSB-PA618873LA01HU
Storage	Upon receipt, store at -20°C or -80°C. Avoid repeated freeze.
Uniprot No.	Q14093
Immunogen	Recombinant Human Cylicin-2 protein (1-156AA)
Raised In	Rabbit
Species Reactivity	Human
Tested Applications	ELISA, WB; Recommended dilution: WB:1:500-1:2000
Form	Liquid
Conjugate	Non-conjugated
Storage Buffer	Preservative: 0.03% Proclin 300 Constituents: 50% Glycerol, 0.01M PBS, PH 7.4
Purification Method	>95%, Protein G purified
Isotype	IgG
Clonality	Polyclonal
Alias	Cylicin-2 (Cylicin II) (Multiple-band polypeptide II), CYLC2, CYL2
Immunogen Species	Homo sapiens (Human)
Research Area	Tags & Cell Markers
Target Names	CYLC2

Image



Western blot
 All lanes: CYLC2 antibody at 12µg/ml + 293T whole cell lysate
 Secondary
 Goat polyclonal to rabbit IgG at 1/10000 dilution
 Predicted band size: 40 kDa
 Observed band size: 40 kDa

Usage

For Research Use Only. Not for use in diagnostic or therapeutic procedures.