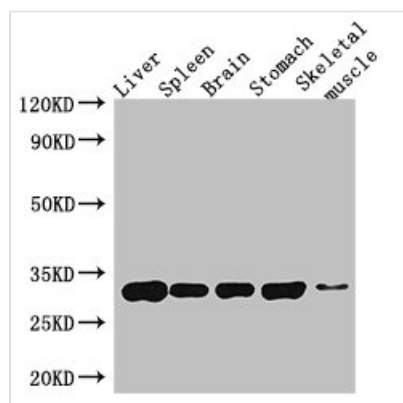




GPM6A Antibody

Product Code	CSB-PA009722LA01HU
Storage	Upon receipt, store at -20°C or -80°C. Avoid repeated freeze.
Uniprot No.	P51674
Immunogen	Recombinant Human Neuronal membrane glycoprotein M6-a protein (149-213AA)
Raised In	Rabbit
Species Reactivity	Human, Mouse
Tested Applications	ELISA, WB, IF; Recommended dilution: WB:1:500-1:5000, IF:1:50-1:200
Form	Liquid
Conjugate	Non-conjugated
Storage Buffer	Preservative: 0.03% Proclin 300 Constituents: 50% Glycerol, 0.01M PBS, PH 7.4
Purification Method	>95%, Protein G purified
Isotype	IgG
Clonality	Polyclonal
Alias	Neuronal membrane glycoprotein M6-a (M6a), GPM6A, M6A
Immunogen Species	Homo sapiens (Human)
Research Area	Neuroscience
Target Names	GPM6A

Image



Western Blot

Positive WB detected in: Mouse liver tissue, Mouse spleen tissue, Mouse brain tissue, Mouse stomach tissue, Mouse skeletal muscle tissue

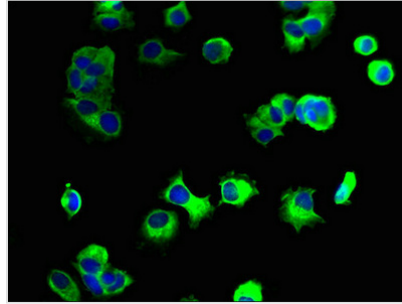
All lanes: GPM6A antibody at 4µg/ml

Secondary

Goat polyclonal to rabbit IgG at 1/50000 dilution

Predicted band size: 32, 31, 30 kDa

Observed band size: 32 kDa



Immunofluorescent analysis of MCF-7 cells using CSB-PA009722LA01HU at dilution of 1:100 and Alexa Fluor 488-conjugated AffiniPure Goat Anti-Rabbit IgG(H+L)

Usage

For Research Use Only. Not for use in diagnostic or therapeutic procedures.