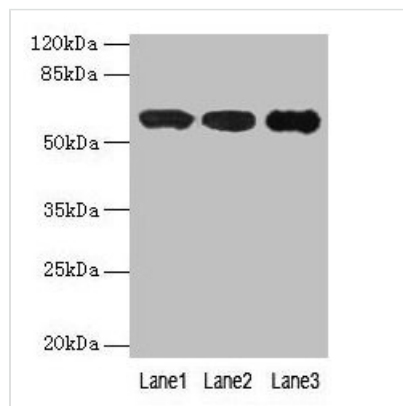




IMPDH2 Antibody

Product Code	CSB-PA011701LA01HU
Storage	Upon receipt, store at -20°C or -80°C. Avoid repeated freeze.
Uniprot No.	P12268
Immunogen	Recombinant Human Inosine-5'-monophosphate dehydrogenase 2 protein (5-514AA)
Raised In	Rabbit
Species Reactivity	Human, Mouse
Tested Applications	ELISA, WB, IHC, IF; Recommended dilution: WB:1:500-1:5000, IHC:1:20-1:200, IF:1:50-1:200
Form	Liquid
Conjugate	Non-conjugated
Storage Buffer	Preservative: 0.03% Proclin 300 Constituents: 50% Glycerol, 0.01M PBS, PH 7.4
Purification Method	>95%, Protein G purified
Isotype	IgG
Clonality	Polyclonal
Alias	Inosine-5'-monophosphate dehydrogenase 2 (IMP dehydrogenase 2) (IMPD 2) (IMPDH 2) (EC 1.1.1.205) (IMPDH-II), IMPDH2, IMPD2
Immunogen Species	Homo sapiens (Human)
Research Area	Signal Transduction
Target Names	IMPDH2

Image



Western blot

All lanes: IMPDH2 antibody at 12µg/ml

Lane 1: Mouse heart tissue

Lane 2: A549 whole cell lysate

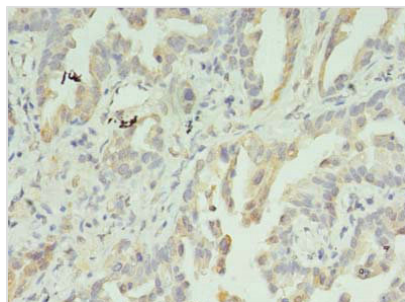
Lane 3: Hela whole cell lysate

Secondary

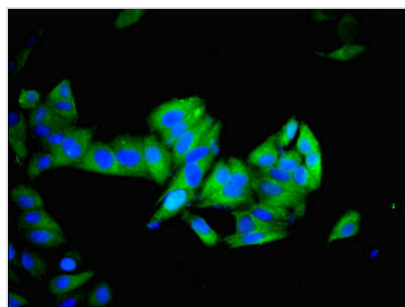
Goat polyclonal to rabbit IgG at 1/10000 dilution

Predicted band size: 56 kDa

Observed band size: 56 kDa



Immunohistochemistry of paraffin-embedded human lung cancer using CSB-PA011701LA01HU at dilution of 1:100



Immunofluorescent analysis of HeLa cells using CSB-PA011701LA01HU at dilution of 1:100 and Alexa Fluor 488-conjugated AffiniPure Goat Anti-Rabbit IgG(H+L)

Usage

For Research Use Only. Not for use in diagnostic or therapeutic procedures.