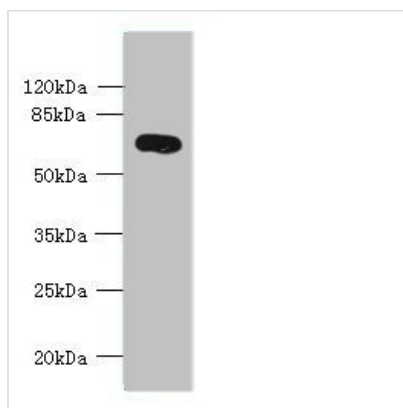




KCNS2 Antibody

Product Code	CSB-PA892470LA01HU
Storage	Upon receipt, store at -20°C or -80°C. Avoid repeated freeze.
Uniprot No.	Q9ULS6
Immunogen	Recombinant Human Potassium voltage-gated channel subfamily S member 2 protein (1-183AA)
Raised In	Rabbit
Species Reactivity	Human, Mouse
Tested Applications	ELISA, WB, IF; Recommended dilution: WB:1:1000-1:5000, IF:1:50-1:200
Form	Liquid
Conjugate	Non-conjugated
Storage Buffer	Preservative: 0.03% Proclin 300 Constituents: 50% Glycerol, 0.01M PBS, PH 7.4
Purification Method	>95%, Protein G purified
Isotype	IgG
Clonality	Polyclonal
Alias	Potassium voltage-gated channel subfamily S member 2 (Delayed-rectifier K(+) channel alpha subunit 2) (Voltage-gated potassium channel subunit Kv9.2), KCNS2, KIAA1144
Immunogen Species	Homo sapiens (Human)
Research Area	Neuroscience
Target Names	KCNS2

Image



Western blot

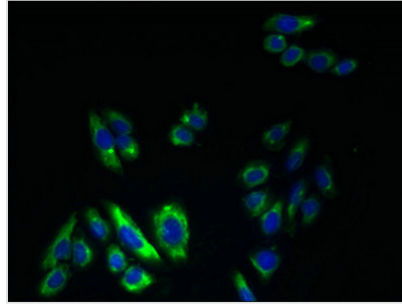
All lanes: KCNS2 antibody at 4µg/ml + Mouse eye tissue

Secondary

Goat polyclonal to rabbit IgG at 1/10000 dilution

Predicted band size: 54 kDa

Observed band size: 54 kDa



Immunofluorescent analysis of HepG2 cells using CSB-PA892470LA01HU at dilution of 1:100 and Alexa Fluor 488-conjugated AffiniPure Goat Anti-Rabbit IgG(H+L)

Usage

For Research Use Only. Not for use in diagnostic or therapeutic procedures.