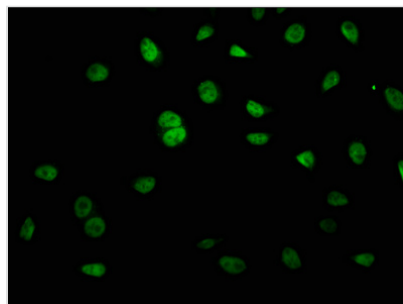




KRCC1 Antibody

Product Code	CSB-PA868279LA01HU
Storage	Upon receipt, store at -20°C or -80°C. Avoid repeated freeze.
Uniprot No.	Q9NPI7
Immunogen	Recombinant Human Lysine-rich coiled-coil protein 1 protein (1-259AA)
Raised In	Rabbit
Species Reactivity	Human
Tested Applications	ELISA, IF; Recommended dilution: IF:1:50-1:200
Form	Liquid
Conjugate	Non-conjugated
Storage Buffer	Preservative: 0.03% Proclin 300 Constituents: 50% Glycerol, 0.01M PBS, PH 7.4
Purification Method	Antigen Affinity Purified
Isotype	IgG
Clonality	Polyclonal
Alias	Lysine-rich coiled-coil protein 1 (Cryptogenic hepatitis-binding protein 2), KRCC1, CHBP2
Immunogen Species	Homo sapiens (Human)
Research Area	Cell Biology
Target Names	KRCC1

Image



Immunofluorescence staining of A549 cells with CSB-PA868279LA01HU at 1:66, counter-stained with DAPI. The cells were fixed in 4% formaldehyde, permeabilized using 0.2% Triton X-100 and blocked in 10% normal Goat Serum. The cells were then incubated with the antibody overnight at 4°C. The secondary antibody was Alexa Fluor 488-conjugated AffiniPure Goat Anti-Rabbit IgG(H+L).

Usage

For Research Use Only. Not for use in diagnostic or therapeutic procedures.