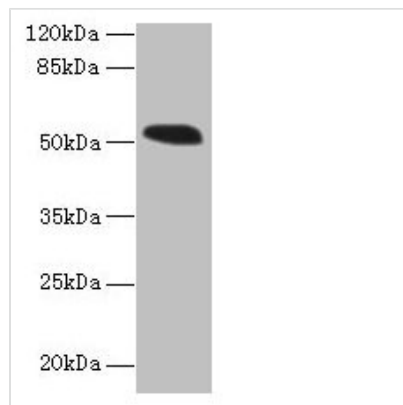




MIEF1 Antibody

Product Code	CSB-PA873622LA01HU
Storage	Upon receipt, store at -20°C or -80°C. Avoid repeated freeze.
Uniprot No.	Q9NQG6
Immunogen	Recombinant Human Mitochondrial dynamics protein MID51 protein (51-309AA)
Raised In	Rabbit
Species Reactivity	Human, Mouse
Tested Applications	ELISA, WB; Recommended dilution: WB:1:500-1:2000
Form	Liquid
Conjugate	Non-conjugated
Storage Buffer	Preservative: 0.03% Proclin 300 Constituents: 50% Glycerol, 0.01M PBS, PH 7.4
Purification Method	>95%, Protein G purified
Isotype	IgG
Clonality	Polyclonal
Alias	Mitochondrial dynamics protein MID51 (Mitochondrial dynamics protein of 51 kDa) (Mitochondrial elongation factor 1) (Smith-Magenis syndrome chromosomal region candidate gene 7 protein-like) (SMCR7-like protein), MIEF1, MID51 SMCR7L
Immunogen Species	Homo sapiens (Human)
Research Area	Cell Biology
Target Names	MIEF1

Image



Western blot

All lanes: MIEF1 antibody at 4µg/ml + Mouse liver tissue

Secondary

Goat polyclonal to rabbit IgG at 1/10000 dilution

Predicted band size: 52, 16, 9 kDa

Observed band size: 52 kDa