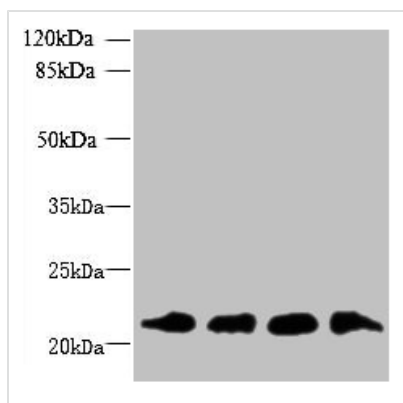




MRPL18 Antibody

Product Code	CSB-PA861987LA01HU
Storage	Upon receipt, store at -20°C or -80°C. Avoid repeated freeze.
Uniprot No.	Q9H0U6
Immunogen	Recombinant Human 39S ribosomal protein L18, mitochondrial protein (14-180AA)
Raised In	Rabbit
Species Reactivity	Human
Tested Applications	ELISA, WB, IHC; Recommended dilution: WB:1:500-1:2000, IHC:1:20-1:200
Form	Liquid
Conjugate	Non-conjugated
Storage Buffer	Preservative: 0.03% Proclin 300 Constituents: 50% Glycerol, 0.01M PBS, PH 7.4
Purification Method	>95%, Protein G purified
Isotype	IgG
Clonality	Polyclonal
Alias	39S ribosomal protein L18, mitochondrial (L18mt) (MRP-L18) (Mitochondrial large ribosomal subunit protein uL18m), MRPL18
Immunogen Species	Homo sapiens (Human)
Research Area	Tags & Cell Markers
Target Names	MRPL18

Image



Western blot

All lanes: MRPL18 antibody at 8µg/ml

Lane 1: U251 whole cell lysate

Lane 2: THP-1 whole cell lysate

Lane 3: PC-3 whole cell lysate

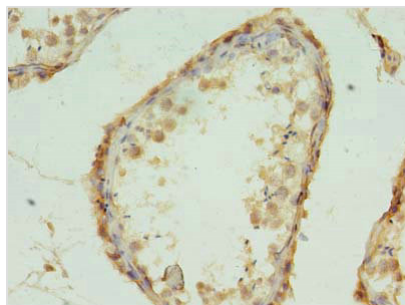
Lane 4: U87 whole cell lysate

Secondary

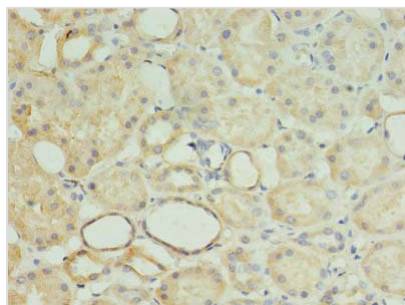
Goat polyclonal to rabbit IgG at 1/10000 dilution

Predicted band size: 21 kDa

Observed band size: 21 kDa



Immunohistochemistry of paraffin-embedded human testis tissue using CSB-PA861987LA01HU at dilution of 1:100



Immunohistochemistry of paraffin-embedded human kidney tissue using CSB-PA861987LA01HU at dilution of 1:100

Usage

For Research Use Only. Not for use in diagnostic or therapeutic procedures.