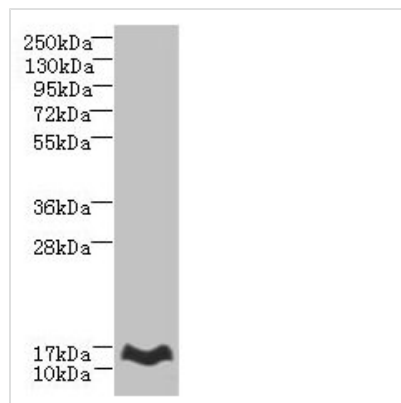




MTHFD2L Antibody

Product Code	CSB-PA872521LA01HU
Storage	Upon receipt, store at -20°C or -80°C. Avoid repeated freeze.
Uniprot No.	Q9H903
Immunogen	Recombinant Human Probable bifunctional methylenetetrahydrofolate dehydrogenase/cyclohydrolase 2 protein (136-268AA)
Raised In	Rabbit
Species Reactivity	Human, Mouse
Tested Applications	ELISA, WB; Recommended dilution: WB:1:500-1:2000
Form	Liquid
Conjugate	Non-conjugated
Storage Buffer	Preservative: 0.03% Proclin 300 Constituents: 50% Glycerol, 0.01M PBS, PH 7.4
Purification Method	>95%, Protein G purified
Isotype	IgG
Clonality	Polyclonal
Alias	Probable bifunctional methylenetetrahydrofolate dehydrogenase/cyclohydrolase 2 (NADP-dependent methylenetetrahydrofolate dehydrogenase 2-like protein) (MTHFD2-like) [Includes: NAD-dependent methylenetetrahydrofolate dehydrogenase (EC 1.5.1.15); Methenyltetrahydrofolate cyclohydrolase (EC 3.5.4.9)], MTHFD2L
Immunogen Species	Homo sapiens (Human)
Research Area	Signal Transduction
Target Names	MTHFD2L

Image



Western blot

All lanes: MTHFD2L antibody at 6µg/ml + Mouse lung tissue
Secondary
Goat polyclonal to rabbit IgG at 1/10000 dilution
Predicted band size: 38, 32, 8, 25, 33 kDa
Observed band size: 14 kDa