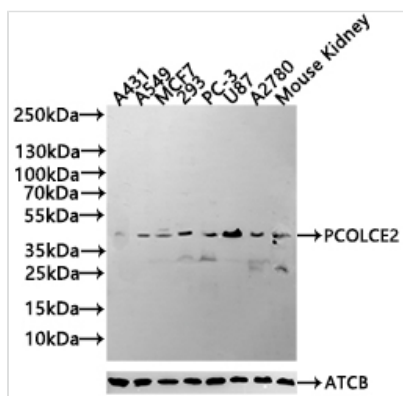




# PCOLCE2 Antibody

<b>Product Code</b>	CSB-PA017632LA01HU
<b>Storage</b>	Upon receipt, store at -20°C or -80°C. Avoid repeated freeze.
<b>Uniprot No.</b>	Q9UKZ9
<b>Immunogen</b>	Recombinant Human Procollagen C-endopeptidase enhancer 2 protein (24-415AA)
<b>Raised In</b>	Rabbit
<b>Species Reactivity</b>	Human, Mouse
<b>Tested Applications</b>	ELISA, WB, IF; Recommended dilution: WB:1:500-1:2000, IF:1:20-1:100
<b>Form</b>	Liquid
<b>Conjugate</b>	Non-conjugated
<b>Storage Buffer</b>	Preservative: 0.03% Proclin 300 Constituents: 50% Glycerol, 0.01M PBS, PH 7.4
<b>Purification Method</b>	>95%, Protein G purified
<b>Isotype</b>	IgG
<b>Clonality</b>	Polyclonal
<b>Product Type</b>	Polyclonal Antibody
<b>Immunogen Species</b>	Homo sapiens (Human)
<b>Research Area</b>	Signal Transduction
<b>Target Names</b>	PCOLCE2

## Image

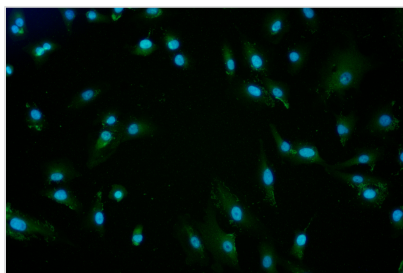


### Western Blot

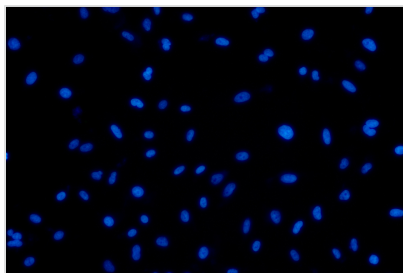
Positive WB detected in: A431 whole cell lysate(30µg), A549 whole cell lysate(30µg), MCF7 whole cell lysate(30µg), 293 whole cell lysate(30µg), PC-3 whole cell lysate(30µg), U87 whole cell lysate(30µg),A2780 whole cell lysate(30µg), Mouse Kidney tissue lysate(30µg)  
All lanes: PCOLCE2 antibody at 1:1000

### Secondary

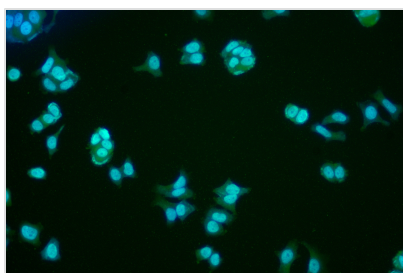
Goat polyclonal to rabbit IgG at 1/40000 dilution  
Predicted band size: 46 kDa  
Observed band size: 46 kDa  
Exposure time: 120s



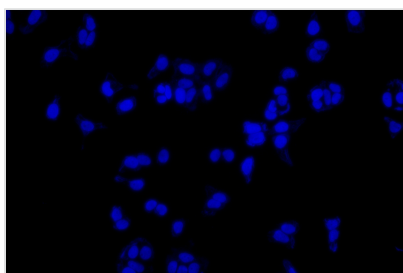
Immunofluorescence staining of A549 cell with CSB-PA017632LA01HU at 1:30, counter-stained with DAPI. The cells were fixed in 4% formaldehyde and permeated by 0.2% TritonX-100 for 15 min. Then 10% normal goat serum to block non-specific protein-protein interactions. The cells were then incubated with the antibody overnight at 4°C. The secondary antibody was Alexa Fluor 488-conjugated AffiniPure Goat Anti-Rabbit IgG(H+L).



Immunofluorescence staining of A549 cell with 5% goat serum, counter-stained with DAPI. The cells were fixed in 4% formaldehyde and blocked in 10% normal Goat Serum. The cells were then incubated with the antibody overnight at 4°C. The secondary antibody was Alexa Fluor 488-conjugated AffiniPure Goat Anti-Rabbit IgG(H+L).



Immunofluorescence staining of MCF-7 cell with CSB-PA017632LA01HU at 1:30, counter-stained with DAPI. The cells were fixed in 4% formaldehyde and permeated by 0.2% TritonX-100 for 15 min. Then 10% normal goat serum to block non-specific protein-protein interactions. The cells were then incubated with the antibody overnight at 4°C. The secondary antibody was Alexa Fluor 488-conjugated AffiniPure Goat Anti-Rabbit IgG(H+L).



Immunofluorescence staining of MCF-7 cell with 5% goat serum, counter-stained with DAPI. The cells were fixed in 4% formaldehyde and blocked in 10% normal Goat Serum. The cells were then incubated with the antibody overnight at 4°C. The secondary antibody was Alexa Fluor 488-conjugated AffiniPure Goat Anti-Rabbit IgG(H+L).

## Usage

For Research Use Only. Not for use in diagnostic or therapeutic procedures.