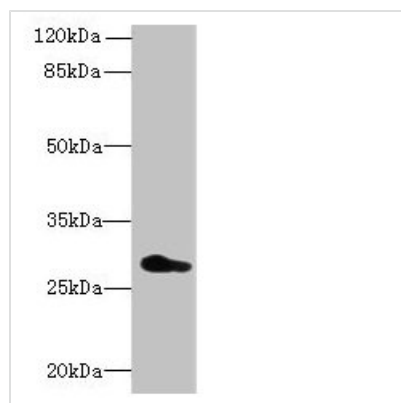




# REEP4 Antibody

<b>Product Code</b>	CSB-PA875682LA01HU
<b>Storage</b>	Upon receipt, store at -20°C or -80°C. Avoid repeated freeze.
<b>Uniprot No.</b>	Q9H6H4
<b>Immunogen</b>	Recombinant Human Receptor expression-enhancing protein 4 protein (78-257AA)
<b>Raised In</b>	Rabbit
<b>Species Reactivity</b>	Human
<b>Tested Applications</b>	ELISA, WB, IHC, IF; Recommended dilution: WB:1:500-1:5000, IHC:1:20-1:200, IF:1:50-1:200
<b>Form</b>	Liquid
<b>Conjugate</b>	Non-conjugated
<b>Storage Buffer</b>	Preservative: 0.03% Proclin 300 Constituents: 50% Glycerol, 0.01M PBS, PH 7.4
<b>Purification Method</b>	Antigen Affinity Purified
<b>Isotype</b>	IgG
<b>Clonality</b>	Polyclonal
<b>Alias</b>	Receptor expression-enhancing protein 4, REEP4, C8orf20
<b>Immunogen Species</b>	Homo sapiens (Human)
<b>Research Area</b>	Others
<b>Target Names</b>	REEP4

## Image



Western blot

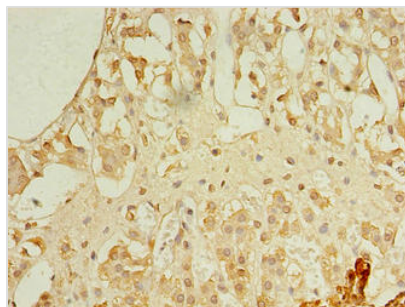
All lanes: REEP4 antibody at 0.7µg/ml + U251 whole cell lysate

Secondary

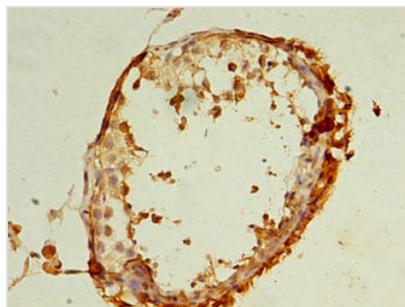
Goat polyclonal to rabbit IgG at 1/10000 dilution

Predicted band size: 30, 20 kDa

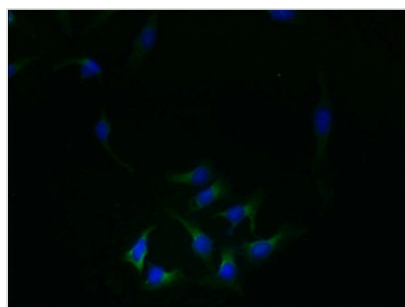
Observed band size: 30 kDa



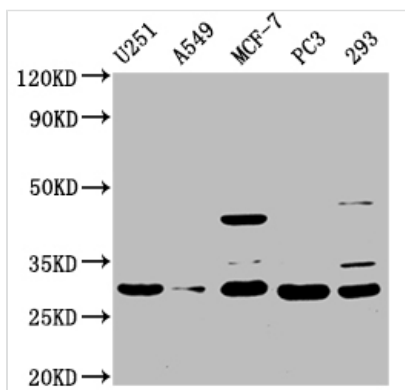
Immunohistochemistry of paraffin-embedded human adrenal gland tissue using CSB-PA875682LA01HU at dilution of 1:100



Immunohistochemistry of paraffin-embedded human testis tissue using CSB-PA875682LA01HU at dilution of 1:100



Immunofluorescent analysis of HeLa cells using CSB-PA875682LA01HU at dilution of 1:100 and Alexa Fluor 488-conjugated AffiniPure Goat Anti-Rabbit IgG(H+L)



**Western Blot**

Positive WB detected in: U251 whole cell lysate, A549 whole cell lysate, MCF-7 whole cell lysate, PC-3 whole cell lysate, 293 whole cell lysate  
All lanes: REEP4 antibody at 1:1500

**Secondary**

Goat polyclonal to rabbit IgG at 1/50000 dilution  
Predicted band size: 30, 20 kDa  
Observed band size: 30 kDa

**Usage**

For Research Use Only. Not for use in diagnostic or therapeutic procedures.