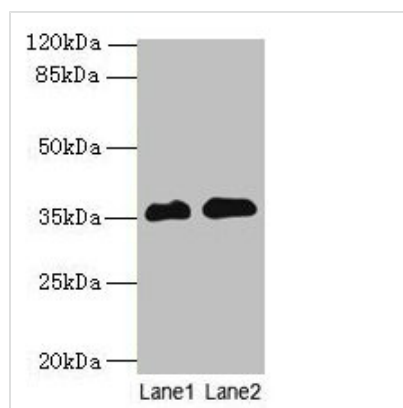




RFPL3 Antibody

Product Code	CSB-PA019600LA01HU
Storage	Upon receipt, store at -20°C or -80°C. Avoid repeated freeze.
Uniprot No.	O75679
Immunogen	Recombinant Human Ret finger protein-like 3 protein (8-288AA)
Raised In	Rabbit
Species Reactivity	Human
Tested Applications	ELISA, WB; Recommended dilution: WB:1:500-1:2000
Form	Liquid
Conjugate	Non-conjugated
Storage Buffer	Preservative: 0.03% Proclin 300 Constituents: 50% Glycerol, 0.01M PBS, PH 7.4
Purification Method	>95%, Protein G purified
Isotype	IgG
Clonality	Polyclonal
Alias	Ret finger protein-like 3, RFPL3
Immunogen Species	Homo sapiens (Human)
Research Area	Others
Target Names	RFPL3

Image



Western blot
 All lanes: RFPL3 antibody at 8μg/ml
 Lane 1: Human placenta tissue
 Lane 2: HL60 whole cell lysate
 Secondary
 Goat polyclonal to rabbit IgG at 1/10000 dilution
 Predicted band size: 36, 33 kDa
 Observed band size: 36 kDa