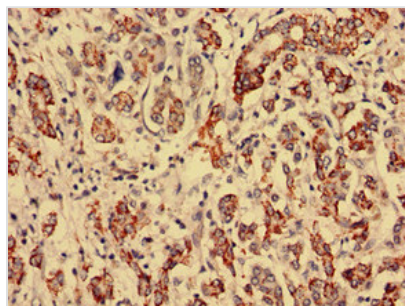




# RTCA Antibody

<b>Product Code</b>	CSB-PA520755LA01HU
<b>Storage</b>	Upon receipt, store at -20°C or -80°C. Avoid repeated freeze.
<b>Uniprot No.</b>	O00442
<b>Immunogen</b>	Recombinant Human RNA 3'-terminal phosphate cyclase protein (167-379AA)
<b>Raised In</b>	Rabbit
<b>Species Reactivity</b>	Human
<b>Tested Applications</b>	ELISA, IHC; Recommended dilution: IHC:1:20-1:200
<b>Form</b>	Liquid
<b>Conjugate</b>	Non-conjugated
<b>Storage Buffer</b>	Preservative: 0.03% Proclin 300 Constituents: 50% Glycerol, 0.01M PBS, PH 7.4
<b>Purification Method</b>	>95%, Protein G purified
<b>Isotype</b>	IgG
<b>Clonality</b>	Polyclonal
<b>Alias</b>	RNA 3'-terminal phosphate cyclase (RNA cyclase) (RNA-3'-phosphate cyclase) (EC 6.5.1.4) (RNA terminal phosphate cyclase domain-containing protein 1) (RTC domain-containing protein 1), RTCA, RPC RPC1 RTC1 RTCD1
<b>Immunogen Species</b>	Homo sapiens (Human)
<b>Research Area</b>	Others
<b>Target Names</b>	RTCA

## Image



Immunohistochemistry analysis of human breast cancer using CSB-PA520755LA01HU at dilution of 1:100

## Usage

For Research Use Only. Not for use in diagnostic or therapeutic procedures.