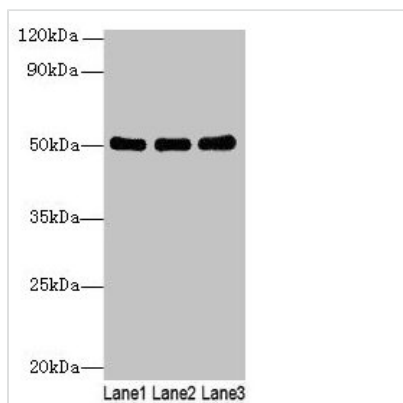




SIGLEC6 Antibody

Product Code	CSB-PA021300LA01HU
Storage	Upon receipt, store at -20°C or -80°C. Avoid repeated freeze.
Uniprot No.	O43699
Immunogen	Recombinant Human Sialic acid-binding Ig-like lectin 6 protein (76-269AA)
Raised In	Rabbit
Species Reactivity	Human
Tested Applications	ELISA, WB, IHC; Recommended dilution: WB:1:500-1:2000, IHC:1:20-1:200
Form	Liquid
Conjugate	Non-conjugated
Storage Buffer	Preservative: 0.03% Proclin 300 Constituents: 50% Glycerol, 0.01M PBS, PH 7.4
Purification Method	>95%, Protein G purified
Isotype	IgG
Clonality	Polyclonal
Alias	Sialic acid-binding Ig-like lectin 6 (Siglec-6) (CD33 antigen-like 1) (CDw327) (Obesity-binding protein 1) (OB-BP1) (CD antigen CD327), SIGLEC6, CD33L CD33L1 OBBP1
Immunogen Species	Homo sapiens (Human)
Research Area	Immunology
Target Names	SIGLEC6

Image



Western blot

All lanes: SIGLEC6 antibody at 6µg/ml

Lane 1: Human high value serum

Lane 2: A549 whole cell lysate

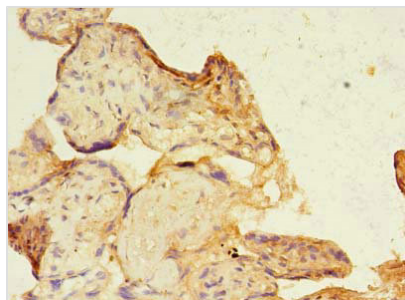
Lane 3: Caco-2 whole cell lysate

Secondary

Goat polyclonal to rabbit IgG at 1/10000 dilution

Predicted band size: 50, 39, 49, 38, 43, 45 kDa

Observed band size: 50 kDa



Immunohistochemistry of paraffin-embedded human placenta tissue using CSB-PA021300LA01HU at dilution of 1:100

Usage

For Research Use Only. Not for use in diagnostic or therapeutic procedures.