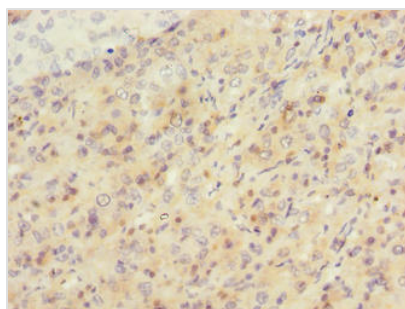




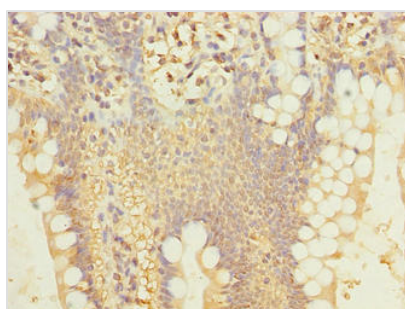
SIPA1L2 Antibody

Product Code	CSB-PA882179LA01HU
Storage	Upon receipt, store at -20°C or -80°C. Avoid repeated freeze.
Uniprot No.	Q9P2F8
Immunogen	Recombinant Human Signal-induced proliferation-associated 1-like protein 2 protein (522-778AA)
Raised In	Rabbit
Species Reactivity	Human
Tested Applications	ELISA, IHC; Recommended dilution: IHC:1:20-1:200
Form	Liquid
Conjugate	Non-conjugated
Storage Buffer	Preservative: 0.03% Proclin 300 Constituents: 50% Glycerol, 0.01M PBS, PH 7.4
Purification Method	>95%, Protein G purified
Isotype	IgG
Clonality	Polyclonal
Alias	Signal-induced proliferation-associated 1-like protein 2 (SIPA1-like protein 2), SIPA1L2, KIAA1389
Immunogen Species	Homo sapiens (Human)
Research Area	Signal Transduction
Target Names	SIPA1L2

Image



Immunohistochemistry of paraffin-embedded human liver cancer using CSB-PA882179LA01HU at dilution of 1:100



Immunohistochemistry of paraffin-embedded human small intestine tissue using CSB-PA882179LA01HU at dilution of 1:100



Usage

For Research Use Only. Not for use in diagnostic or therapeutic procedures.