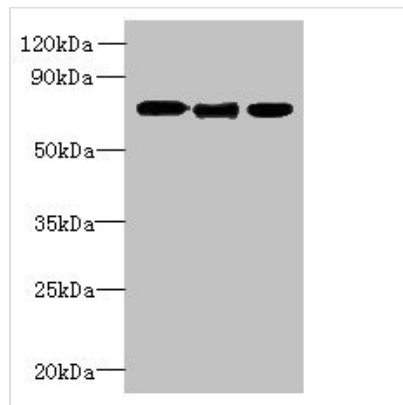




SLC23A1 Antibody

Product Code	CSB-PA887038LA01HU
Storage	Upon receipt, store at -20°C or -80°C. Avoid repeated freeze.
Uniprot No.	Q9UHI7
Immunogen	Recombinant Human Solute carrier family 23 member 1 protein (173-259AA)
Raised In	Rabbit
Species Reactivity	Human, Mouse
Tested Applications	ELISA, WB, IHC, IF; Recommended dilution: WB:1:500-1:5000, IHC:1:20-1:200, IF:1:50-1:200
Form	Liquid
Conjugate	Non-conjugated
Storage Buffer	Preservative: 0.03% Proclin 300 Constituents: 50% Glycerol, 0.01M PBS, PH 7.4
Purification Method	>95%, Protein G purified
Isotype	IgG
Clonality	Polyclonal
Alias	Solute carrier family 23 member 1 (Na(+)/L-ascorbic acid transporter 1) (Sodium-dependent vitamin C transporter 1) (hSVCT1) (Yolk sac permease-like molecule 3), SLC23A1, SVCT1 YSPL3
Immunogen Species	Homo sapiens (Human)
Research Area	Others
Target Names	SLC23A1

Image



Western blot

All lanes: SLC23A1 antibody at 3μg/ml

Lane 1: A549 whole cell lysate

Lane 2: Mouse liver tissue

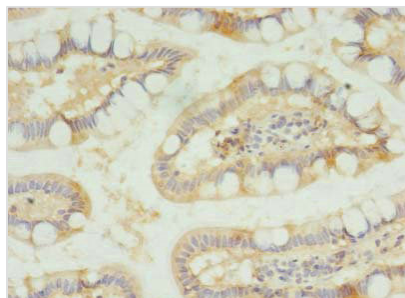
Lane 3: Mouse kidney tissue

Secondary

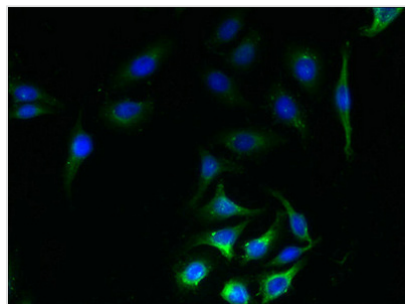
Goat polyclonal to rabbit IgG at 1/10000 dilution

Predicted band size: 65, 66, 29 kDa

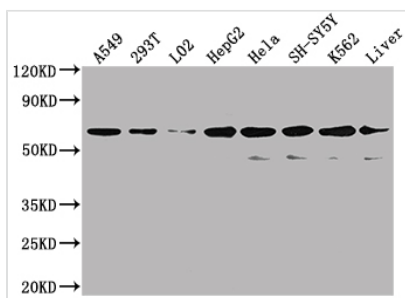
Observed band size: 65 kDa



Immunohistochemistry of paraffin-embedded human small intestine tissue using CSB-PA887038LA01HU at dilution of 1:100



Immunofluorescent analysis of A549 cells using CSB-PA887038LA01HU at dilution of 1:100 and Alexa Fluor 488-conjugated AffiniPure Goat Anti-Rabbit IgG(H+L)



Western Blot

Positive WB detected in: A549 whole cell lysate, 293T whole cell lysate, L02 whole cell lysate, HepG2 whole cell lysate, Hela whole cell lysate, SH-SY5Y whole cell lysate, K562 whole cell lysate, Mouse liver tissue

All lanes: SLC23A1 antibody at 1:2000

Secondary

Goat polyclonal to rabbit IgG at 1/50000 dilution

Predicted band size: 65, 66, 29 kDa

Observed band size: 80 kDa