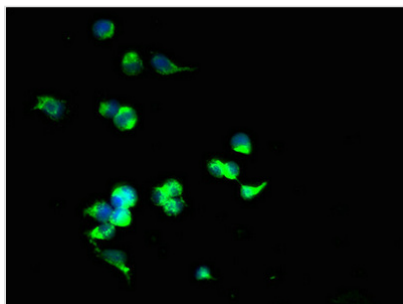




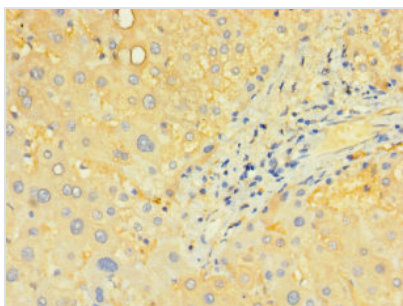
SLC25A40 Antibody

Product Code	CSB-PA840561LA01HU
Storage	Upon receipt, store at -20°C or -80°C. Avoid repeated freeze.
Uniprot No.	Q8TBP6
Immunogen	Recombinant Human Solute carrier family 25 member 40 protein (40-102AA)
Raised In	Rabbit
Species Reactivity	Human
Tested Applications	ELISA, IHC, IF; Recommended dilution: IHC:1:20-1:200, IF:1:50-1:200
Form	Liquid
Conjugate	Non-conjugated
Storage Buffer	Preservative: 0.03% Proclin 300 Constituents: 50% Glycerol, 0.01M PBS, PH 7.4
Purification Method	>95%, Protein G purified
Isotype	IgG
Clonality	Polyclonal
Alias	Solute carrier family 25 member 40 (Mitochondrial carrier family protein), SLC25A40, MCFP
Immunogen Species	Homo sapiens (Human)
Research Area	Others
Target Names	SLC25A40

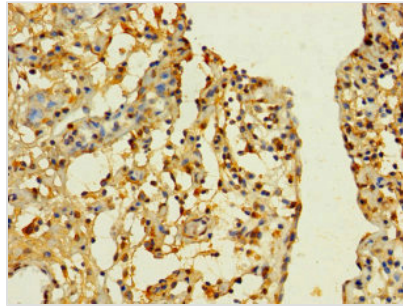
Image



Immunofluorescent analysis of 293T cells using CSB-PA840561LA01HU at dilution of 1:100 and Alexa Fluor 488-conjugated AffiniPure Goat Anti-Rabbit IgG(H+L)



Immunohistochemistry of paraffin-embedded human liver tissue using CSB-PA840561LA01HU at dilution of 1:100



Immunohistochemistry of paraffin-embedded human bladder cancer using CSB-PA840561LA01HU at dilution of 1:100

Usage

For Research Use Only. Not for use in diagnostic or therapeutic procedures.