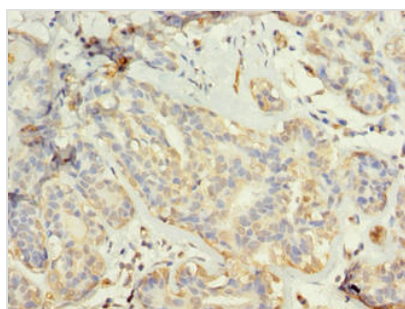




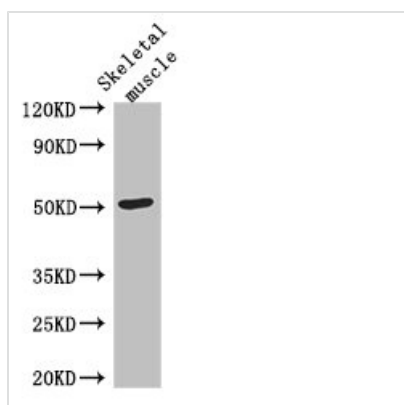
TUBG2 Antibody

Product Code	CSB-PA873636LA01HU
Storage	Upon receipt, store at -20°C or -80°C. Avoid repeated freeze.
Uniprot No.	Q9NRH3
Immunogen	Recombinant Human Tubulin gamma-2 chain protein (276-451AA)
Raised In	Rabbit
Species Reactivity	Human, Mouse
Tested Applications	ELISA, WB, IHC; Recommended dilution: WB:1:500-1:5000, IHC:1:20-1:200
Form	Liquid
Conjugate	Non-conjugated
Storage Buffer	Preservative: 0.03% Proclin 300 Constituents: 50% Glycerol, 0.01M PBS, PH 7.4
Purification Method	>95%, Protein G purified
Isotype	IgG
Clonality	Polyclonal
Alias	Tubulin gamma-2 chain (Gamma-2-tubulin), TUBG2
Immunogen Species	Homo sapiens (Human)
Research Area	Signal Transduction
Target Names	TUBG2

Image



Immunohistochemistry of paraffin-embedded human breast cancer using CSB-PA873636LA01HU at dilution of 1:100



Western Blot

Positive WB detected in: Mouse skeletal muscle tissue

All lanes: TUBG2 antibody at 3µg/ml

Secondary

Goat polyclonal to rabbit IgG at 1/50000 dilution

Predicted band size: 52 kDa

Observed band size: 52 kDa



Usage

For Research Use Only. Not for use in diagnostic or therapeutic procedures.