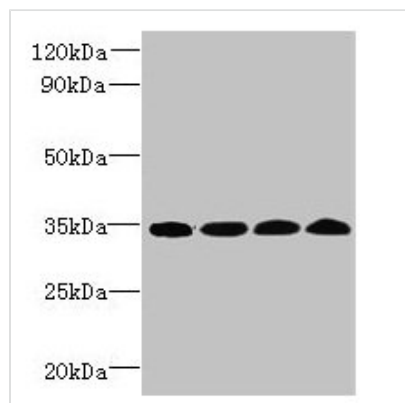




WDR61 Antibody

Product Code	CSB-PA872416LA01HU
Storage	Upon receipt, store at -20°C or -80°C. Avoid repeated freeze.
Uniprot No.	Q9GZS3
Immunogen	Recombinant Human WD repeat-containing protein 61 protein (2-305AA)
Raised In	Rabbit
Species Reactivity	Human, Mouse
Tested Applications	ELISA, WB, IHC; Recommended dilution: WB:1:500-1:2000, IHC:1:20-1:200
Form	Liquid
Conjugate	Non-conjugated
Storage Buffer	Preservative: 0.03% Proclin 300 Constituents: 50% Glycerol, 0.01M PBS, PH 7.4
Purification Method	Antigen Affinity Purified
Isotype	IgG
Clonality	Polyclonal
Alias	WD repeat-containing protein 61 (Meiotic recombination REC14 protein homolog) (SKI8 homolog) (Ski8) [Cleaved into: WD repeat-containing protein 61, N-terminally processed], WDR61
Immunogen Species	Homo sapiens (Human)
Research Area	Cell Biology
Target Names	WDR61

Image



Western blot

All lanes: WDR61 antibody at 1.2μg/ml

Lane 1: Hela whole cell lysate

Lane 2: HepG2 whole cell lysate

Lane 3: Raji whole cell lysate

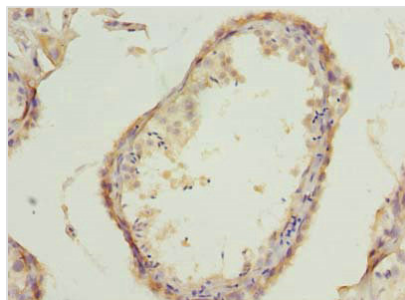
Lane 4: Mouse brain tissue

Secondary

Goat polyclonal to rabbit IgG at 1/10000 dilution

Predicted band size: 34 kDa

Observed band size: 34 kDa



Immunohistochemistry of paraffin-embedded human testis tissue using CSB-PA872416LA01HU at dilution of 1:100