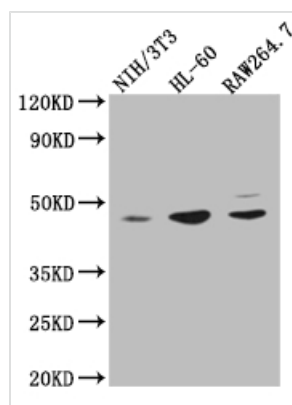




ZDHHC6 Antibody

Product Code	CSB-PA862029LA01HU
Storage	Upon receipt, store at -20°C or -80°C. Avoid repeated freeze.
Uniprot No.	Q9H6R6
Immunogen	Recombinant Human Palmitoyltransferase ZDHHC6 protein (227-409AA)
Raised In	Rabbit
Species Reactivity	Human, Mouse
Tested Applications	ELISA, WB; Recommended dilution: WB:1:500-1:2000
Form	Liquid
Conjugate	Non-conjugated
Storage Buffer	Preservative: 0.03% Proclin 300 Constituents: 50% Glycerol, 0.01M PBS, PH 7.4
Purification Method	Antigen Affinity Purified
Isotype	IgG
Clonality	Polyclonal
Product Type	Polyclonal Antibody
Immunogen Species	Homo sapiens (Human)
Research Area	Cell Biology
Target Names	ZDHHC6

Image



Western Blot

Positive WB detected in: NIH/3T3 whole cell lysate, HL-60 whole cell lysate, RAW264.7 whole cell lysate

All lanes: ZDHHC6 antibody at 1:2000

Secondary

Goat polyclonal to rabbit IgG at 1/50000 dilution

Predicted band size: 48 kDa

Observed band size: 48 kDa