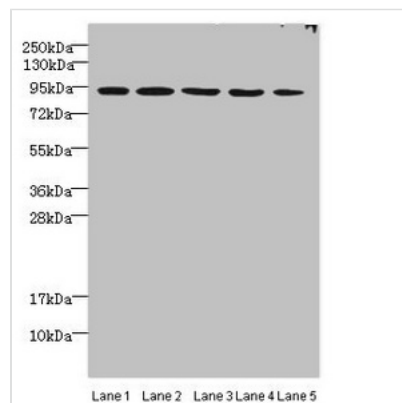




# THOC1 Antibody

<b>Product Code</b>	CSB-PA853419ESR1HU
<b>Storage</b>	Upon receipt, store at -20°C or -80°C. Avoid repeated freeze.
<b>Uniprot No.</b>	Q96FV9
<b>Immunogen</b>	Recombinant Human THO complex subunit 1 protein (428-657AA)
<b>Raised In</b>	Rabbit
<b>Species Reactivity</b>	Human, Mouse
<b>Tested Applications</b>	ELISA, WB, IHC, ChIP; Recommended dilution: WB:1:1000-1:5000, IHC:1:20-1:200
<b>Form</b>	Liquid
<b>Conjugate</b>	Non-conjugated
<b>Storage Buffer</b>	PBS with 0.02% sodium azide, 50% glycerol, pH7.3.
<b>Purification Method</b>	Antigen Affinity Purified
<b>Isotype</b>	IgG
<b>Clonality</b>	Polyclonal
<b>Alias</b>	THO complex subunit 1 (Tho1) (Nuclear matrix protein p84) (p84N5) (hTREX84), THOC1, HPR1
<b>Immunogen Species</b>	Homo sapiens (Human)
<b>Research Area</b>	Tags & Cell Markers
<b>Target Names</b>	THOC1

## Image



### Western blot

All lanes: THOC1 antibody at 3µg/ml

Lane 1: Jurkats whole cell lysate

Lane 2: 293T whole cell lysate

Lane 3: HepG2 whole cell lysate

Lane 4: A549 whole cell lysate

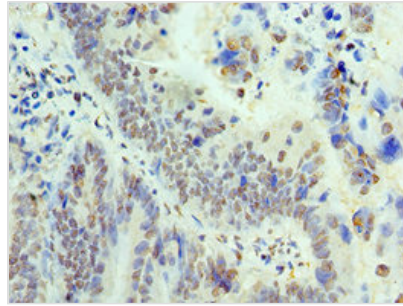
Lane 5: Mouse kidney tissue

Secondary

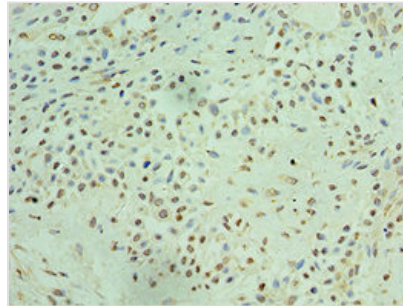
Goat polyclonal to rabbit IgG at 1/10000 dilution

Predicted band size: 76, 44 kDa

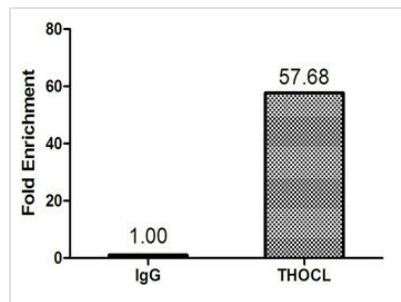
Observed band size: 76 kDa



Immunohistochemistry of paraffin-embedded human colon cancer using CSB-PA853419ESR1HU at dilution of 1:100



Immunohistochemistry of paraffin-embedded human breast cancer using CSB-PA853419ESR1HU at dilution of 1:100



Chromatin Immunoprecipitation 293T ( $1.6 \times 10^6$ ) were cross-linked with formaldehyde, sonicated, and immunoprecipitated with  $4 \mu\text{g}$  anti-THOC1 or a control normal rabbit IgG. The resulting ChIP DNA was quantified tissue using real-time PCR with primers (CSB-PP853419HU) against the RHOX5 promoter.