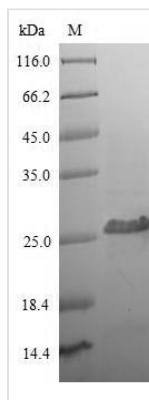




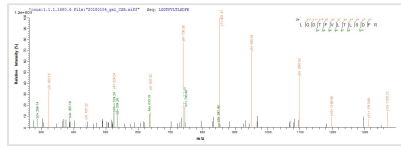
# Recombinant Human T-cell surface glycoprotein CD8 alpha chain (CD8A), partial

<b>Product Code</b>	CSB-MP004966HU
<b>Relevance</b>	Identifies cytotoxic/suppressor T-cells that interact with MHC class I bearing targets. CD8 is thought to play a role in the process of T-cell mediated killing. CD8 alpha chains binds to class I MHC molecules alpha-3 domains.
<b>Abbreviation</b>	Recombinant Human CD8A protein, partial
<b>Storage</b>	The shelf life is related to many factors, storage state, buffer ingredients, storage temperature and the stability of the protein itself. Generally, the shelf life of liquid form is 6 months at -20°C/-80°C. The shelf life of lyophilized form is 12 months at -20°C/-80°C.
<b>Uniprot No.</b>	P01732
<b>Product Type</b>	Recombinant Proteins
<b>Immunogen Species</b>	Homo sapiens (Human)
<b>Purity</b>	Greater than 90% as determined by SDS-PAGE.
<b>Sequence</b>	SQFRVSPLDRTWNLGETVELKQCQVLLSNPTSGCSWLFQPRGAAASPTFLLYL SQNKPKAAEGLDTQRFSGKRLGDTFVLTLSDFRRENEGYYFCSALSNSIMYFS HFVPVFLPAKPTTTPAPRPPTPAPTIASQPLSLRPEACRPAAGGAVHTRGLDFA CD
<b>Source</b>	Mammalian cell
<b>Target Names</b>	CD8A
<b>Expression Region</b>	22-182aa
<b>Notes</b>	Repeated freezing and thawing is not recommended. Store working aliquots at 4°C for up to one week.
<b>Tag Info</b>	N-terminal 6xHis-Myc-tagged
<b>Mol. Weight</b>	21.6kDa
<b>Protein Length</b>	Partial

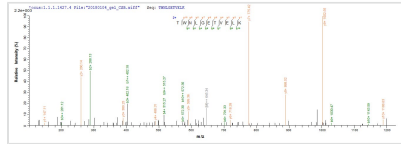
## Image



(Tris-Glycine gel) Discontinuous SDS-PAGE (reduced) with 5% enrichment gel and 15% separation gel.



Based on the SEQUEST from database of Mammalian Cell host and target protein, the LC-MS/MS Analysis result of CSB-MP004966HU could indicate that this peptide derived from Mammalian Cell-expressed Homo sapiens (Human) CD8A.



Based on the SEQUEST from database of Mammalian Cell host and target protein, the LC-MS/MS Analysis result of CSB-MP004966HU could indicate that this peptide derived from Mammalian Cell-expressed Homo sapiens (Human) CD8A.

### Shelf Life

The shelf life is related to many factors, storage state, buffer ingredients, storage temperature and the stability of the protein itself.

Generally, the shelf life of liquid form is 6 months at -20°C/-80°C. The shelf life of lyophilized form is 12 months at -20°C/-80°C.