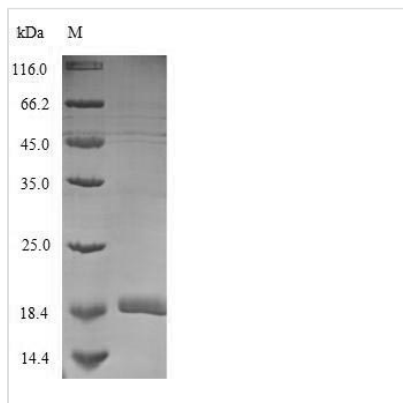




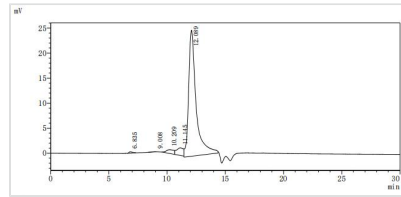
Recombinant Mouse Complement receptor type 2 (Cr2), partial

Product Code	CSB-MP005934MO2
Relevance	Receptor for complement C3d. Participates in B lymphocytes activation.
Abbreviation	Recombinant Mouse Cr2 protein, partial
Storage	The shelf life is related to many factors, storage state, buffer ingredients, storage temperature and the stability of the protein itself. Generally, the shelf life of liquid form is 6 months at -20°C/-80°C. The shelf life of lyophilized form is 12 months at -20°C/-80°C.
Uniprot No.	P19070
Product Type	Recombinant Proteins
Immunogen Species	Mus musculus (Mouse)
Purity	≥ 90% as determined by SDS-PAGE. ≥ 90% as determined by SEC-HPLC.
Sequence	ISCDPPPEVKNARKPYYSPLPIVPGTVLRYTCSPSYRLIGEKAIKFCISENQVHATW DKAPPICESVNKTISCSDPIVPGGFMNKGSKAPFRHGDSVTFTCKANFTMKGS KTVWCQANEMWGPTALPVCESEDFPLE
Research Area	Immunology
Source	Mammalian cell
Target Names	Cr2
Expression Region	12-145aa
Notes	Repeated freezing and thawing is not recommended. Store working aliquots at 4°C for up to one week.
Tag Info	N-terminal 6xHis-Myc-tagged
Mol. Weight	18.7kDa
Protein Length	Partial

Image



(Tris-Glycine gel) Discontinuous SDS-PAGE (reduced) with 5% enrichment gel and 15% separation gel.



The purity of Cr2 was greater than 90% as determined by SEC-HPLC

Shelf Life

The shelf life is related to many factors, storage state, buffer ingredients, storage temperature and the stability of the protein itself.

Generally, the shelf life of liquid form is 6 months at -20°C/-80°C. The shelf life of lyophilized form is 12 months at -20°C/-80°C.