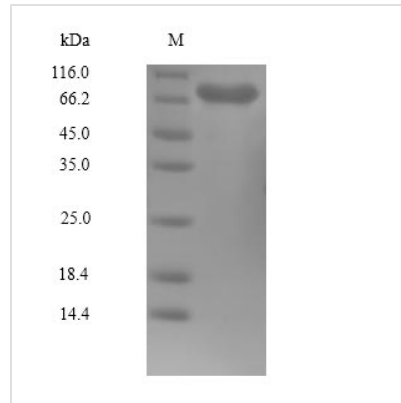




Recombinant Human Serine/threonine-protein kinase PLK1 (PLK1)

Product Code	CSB-BP018193HU
Relevance	Activated by phosphorylation of Thr-210 by AURKA; phosphorylation by AURKA is enhanced by BORA. Once activated, activity is stimulated by binding target proteins. Binding of target proteins has no effect on the non-activated kinase. Several inhibitors targeting PLKs are currently in development and are under investigation in a growing number of clinical trials, such as BI 2536, an ATP-competitive PLK1 inhibitor or BI 6727, a dihydropteridinone that specifically inhibits the catalytic activity of PLK1.
Abbreviation	Recombinant Human PLK1 protein
Storage	The shelf life is related to many factors, storage state, buffer ingredients, storage temperature and the stability of the protein itself. Generally, the shelf life of liquid form is 6 months at -20°C/-80°C. The shelf life of lyophilized form is 12 months at -20°C/-80°C.
Uniprot No.	P53350
Product Type	Recombinant Proteins
Immunogen Species	Homo sapiens (Human)
Purity	Greater than 90% as determined by SDS-PAGE.
Sequence	MSAAVTAGKLARAPADPGKAGVPGVAAPGAPAAAPPAKEIPEVLVDPRSRRR YVRGRFLGKGGFAKCFEISDADTKEVFAGKIVPKSLLLKPHQREKMSMEISIHR SLAHQHVVGFFHGFFEDNDFVVFVLELCRRRSLELHKRRKALTEPEARYYLQRQ IVLGCQYLHRNRVIHRDLKLGNLFLNEDLEVKIGDFGLATKVEYDGERKKTLCG TPNYIAPEVLSKKGHSFEVDVWSIGCIMYLLVGKPPFETSCLKETYLRICKNEY SIPKHINPVAASLIQKMLQTDPTARPTINELLNDEFFTSGYIPARLPITCLTIPPRF SIAPSSLDPSNRKPLTVLNKLENPLPERPREKEEPVVRETGEVVDCHLSDML QQLHSVNASKPSERGLVRQEEAEDPACIPIFWVSKWVDYSDKYGLGYQLCDN SVGVLFDNSTRILILYNDGDSLQYIERDGTESYLTVSSHPNSLMKKITLLKYFRNY MSEHLLKAGANITPREGDELARLPYLRTWFRTRSAILHLSNGSVQINFFQDHT KLILCPLMAAVTYIDEKRDFRTYRLSLLLEEYGCCKELASRLRYARTMVDKLLSS RSASNRLKAS
Research Area	Epigenetics and Nuclear Signaling
Source	Baculovirus
Target Names	PLK1
Expression Region	1-603aa
Notes	Repeated freezing and thawing is not recommended. Store working aliquots at 4°C for up to one week.
Tag Info	N-terminal 10xHis-tagged
Mol. Weight	70.7kDa

**Protein Length****Full Length Protein****Image**

(Tris-Glycine gel) Discontinuous SDS-PAGE (reduced) with 5% enrichment gel and 15% separation gel.

Shelf Life

The shelf life is related to many factors, storage state, buffer ingredients, storage temperature and the stability of the protein itself.

Generally, the shelf life of liquid form is 6 months at -20°C/-80°C. The shelf life of lyophilized form is 12 months at -20°C/-80°C.