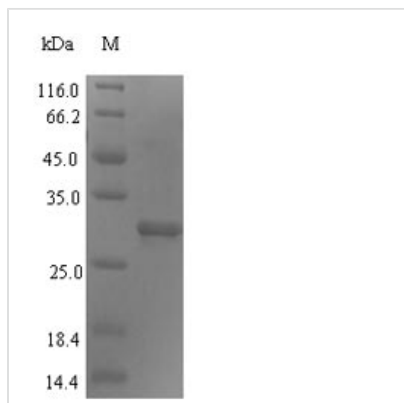




Recombinant Human DNA repair protein complementing XP-G cells (ERCC5), partial

Product Code	CSB-EP007773HU
Relevance	Single-stranded structure-specific DNA endonuclease involved in DNA excision repair. Makes the 3'incision in DNA nucleotide excision repair (NER). Acts as a cofactor for a DNA glycosylase that removes oxidized pyrimidines from DNA. May also be involved in transcription-coupled repair of this kind of damage, in transcription by RNA polymerase II, and perhaps in other processes too.
Abbreviation	Recombinant Human ERCC5 protein, partial
Storage	The shelf life is related to many factors, storage state, buffer ingredients, storage temperature and the stability of the protein itself. Generally, the shelf life of liquid form is 6 months at -20°C/-80°C. The shelf life of lyophilized form is 12 months at -20°C/-80°C.
Uniprot No.	P28715
Alias	DNA excision repair protein ERCC-5 Xeroderma pigmentosum group G-complementing protein
Product Type	Recombinant Protein
Immunogen Species	Homo sapiens (Human)
Purity	≥ 90% as determined by SDS-PAGE.
Sequence	SFLWVGKPDLDKIREFCQRYFGWNRKTDES LFPVLKQLDAQQTQLRIDSFFRL AQQEKEDAKRIKSQRLNRAVTCMLRKEKEAAASEIEAVSVAMEKEFELLDKAK GKTQKRGITNTLEESSSLKRKRLSDSKGKNTCGGFLGETCLSESSDGSSEDA ESSLMNVQRRTAAKEPKTSASDSQNSVKEAPVKNGGATTSSSSDSDDDGG KEKMVLVTARSVFGKKRRKLRRARGRKRKT
Source	E.coli
Target Names	ERCC5
Protein Names	DNA excision repair protein ERCC-5Xeroderma pigmentosum group G-complementing protein
Expression Region	947-1186aa
Notes	Repeated freezing and thawing is not recommended. Store working aliquots at 4°C for up to one week.
Tag Info	N-terminal 6xHis-tagged
Mol. Weight	30.8 kDa
Protein Length	Partial
Image	



(Tris-Glycine gel) Discontinuous SDS-PAGE (reduced) with 5% enrichment gel and 15% separation gel.

Reconstitution

We recommend that this vial be briefly centrifuged prior to opening to bring the contents to the bottom. Please reconstitute protein in deionized sterile water to a concentration of 0.1-1.0 mg/mL. We recommend to add 5-50% of glycerol (final concentration) and aliquot for long-term storage at -20°C/-80°C. Our default final concentration of glycerol is 50%. Customers could use it as reference.

Shelf Life

The shelf life is related to many factors, storage state, buffer ingredients, storage temperature and the stability of the protein itself. Generally, the shelf life of liquid form is 6 months at -20°C/-80°C. The shelf life of lyophilized form is 12 months at -20°C/-80°C.