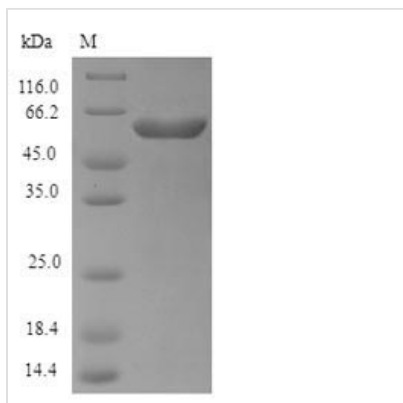


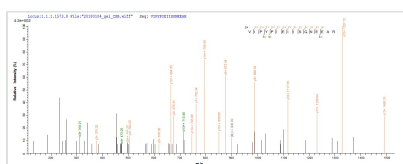


Recombinant Escherichia coli O6:H1 Exopolyphosphatase (ppx)

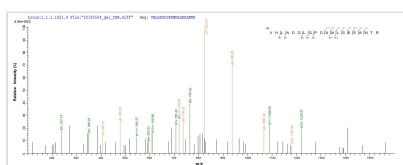
Product Code	CSB-EP360285EGX
Relevance	Degradation of inorganic polyphosphates. Orthophosphate is released progressively from the ends of polyphosphate of circa 500 residues long, while chains of circa 15 residues compete poorly with polyphosphate as substrate
Abbreviation	Recombinant E.coli O6:H1 ppx protein
Storage	The shelf life is related to many factors, storage state, buffer ingredients, storage temperature and the stability of the protein itself. Generally, the shelf life of liquid form is 6 months at -20°C/-80°C. The shelf life of lyophilized form is 12 months at -20°C/-80°C.
Uniprot No.	P0AFL7
Alias	Metaphosphatase
Product Type	Recombinant Protein
Immunogen Species	Escherichia coli O6:H1 (strain CFT073 / ATCC 700928 / UPEC)
Purity	≥ 90% as determined by SDS-PAGE.
Sequence	PIHDKSPRPQEFAAVDLGSNSFHMVIARVVDGAMQIIGRLKQRVHLADGLGPD NMLSEEAMTRGLNCLSLFAERLQGFSPASVCIVGTHTLRQALNATDFLKRAEK VIPYPIEIIISGNEEARLIFMGVEHTQPEKGRKLVIDIGGGSTELVIGENFEPILVES RRMGCVSFAQLYFPGGVINKENFQRARMAAAQKLETLTWQFRIQGWNVAMG ASGTIKAAHEVLMEMGEKDGITPERLEKLVKEVLRHRNFASLSLPLGSEERKT VFVPGLAICGVFDALAIRELRLSDGALREGVLYEMEGFRFRHQDVRSRRTASSL ANQYHIDSEQARRVLDTTMQMYEQWREQQPKLAHPQLEALLRWAAMLHEVG LNINHSGLHRHSAYILQNSDLPGFNQEQQLMMATLVRYHRKAIKDDLPRFTLF KKKQFLPLIQLLRGLVLLNNQRQATTTPTLTLITDDSHWTLRFPHDWFSQNAL VLLDLEKEQEYWEGVAGWRLKIEEESTPEIAA
Research Area	Microbiology
Source	E.coli
Target Names	ppx
Expression Region	2-513aa
Notes	Repeated freezing and thawing is not recommended. Store working aliquots at 4°C for up to one week.
Tag Info	N-terminal 6xHis-tagged
Mol. Weight	62.0kDa
Protein Length	Full Length of Mature Protein
Image	



(Tris-Glycine gel) Discontinuous SDS-PAGE (reduced) with 5% enrichment gel and 15% separation gel.



Based on the SEQUEST from database of E.coli host and target protein, the LC-MS/MS Analysis result of CSB-EP360285EGX could indicate that this peptide derived from E.coli-expressed Escherichia coli O6:H1 (strain CFT073 / ATCC 70928 / UPEC) ppx.



Based on the SEQUEST from database of E.coli host and target protein, the LC-MS/MS Analysis result of CSB-EP360285EGX could indicate that this peptide derived from E.coli-expressed Escherichia coli O6:H1 (strain CFT073 / ATCC 70928 / UPEC) ppx.

Reconstitution

We recommend that this vial be briefly centrifuged prior to opening to bring the contents to the bottom. Please reconstitute protein in deionized sterile water to a concentration of 0.1-1.0 mg/mL. We recommend to add 5-50% of glycerol (final concentration) and aliquot for long-term storage at -20°C/-80°C. Our default final concentration of glycerol is 50%. Customers could use it as reference.

Shelf Life

The shelf life is related to many factors, storage state, buffer ingredients, storage temperature and the stability of the protein itself. Generally, the shelf life of liquid form is 6 months at -20°C/-80°C. The shelf life of lyophilized form is 12 months at -20°C/-80°C.