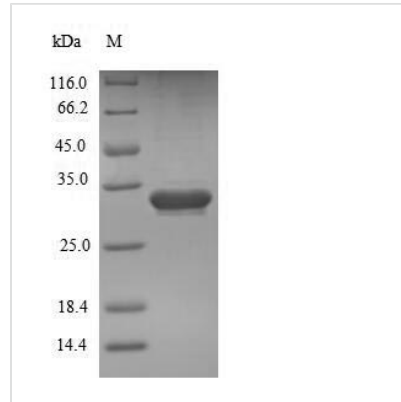




Recombinant Mouse Endothelial cell-specific molecule 1 (Esm1)

Product Code	CSB-EP007825MO
Relevance	Involved in angiogenesis; promotes angiogenic sprouting. May have potent implications in lung endothelial cell-leukocyte interactions
Abbreviation	Recombinant Mouse Esm1 protein
Storage	The shelf life is related to many factors, storage state, buffer ingredients, storage temperature and the stability of the protein itself. Generally, the shelf life of liquid form is 6 months at -20°C/-80°C. The shelf life of lyophilized form is 12 months at -20°C/-80°C.
Uniprot No.	Q9QYY7
Alias	Short name: ESM-1
Product Type	Recombinant Protein
Immunogen Species	Mus musculus (Mouse)
Purity	≥ 90% as determined by SDS-PAGE.
Sequence	AKYAVDCPEHCDKTECRSSLRCKRTVLDDCGCCQVCAAGPGETCYRTVSGM DGVKCGPGLKCHFYSEEDDFGDEFKICKDCPYGTFGMECKETCNCQSGICDR VTGRCLDFPFFQYAAAKSPSRTSASHTERDSASGDGNAVREEIGEGNAARPS VMKWLNPR
Research Area	Tags & Cell Markers
Source	E.coli
Target Names	Esm1
Expression Region	22-184aa
Notes	Repeated freezing and thawing is not recommended. Store working aliquots at 4°C for up to one week.
Tag Info	N-terminal 6xHis-SUMO-tagged
Mol. Weight	33.7kDa
Protein Length	Full Length of Mature Protein
Image	



(Tris-Glycine gel) Discontinuous SDS-PAGE (reduced) with 5% enrichment gel and 15% separation gel.

Reconstitution

We recommend that this vial be briefly centrifuged prior to opening to bring the contents to the bottom. Please reconstitute protein in deionized sterile water to a concentration of 0.1-1.0 mg/mL. We recommend to add 5-50% of glycerol (final concentration) and aliquot for long-term storage at -20°C/-80°C. Our default final concentration of glycerol is 50%. Customers could use it as reference.

Shelf Life

The shelf life is related to many factors, storage state, buffer ingredients, storage temperature and the stability of the protein itself. Generally, the shelf life of liquid form is 6 months at -20°C/-80°C. The shelf life of lyophilized form is 12 months at -20°C/-80°C.