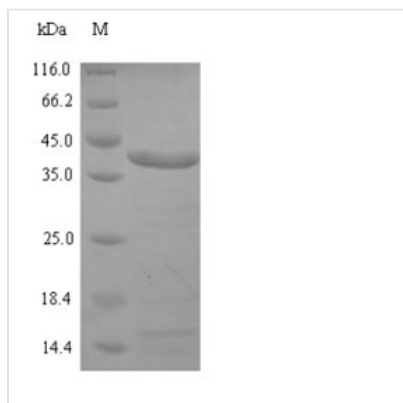




Recombinant Spiroplasma citri Spiralin (spi)

Product Code	CSB-EP322510FKO
Relevance	Major membrane protein of spiroplasma.
Abbreviation	Recombinant Spiroplasma citri spi protein
Storage	The shelf life is related to many factors, storage state, buffer ingredients, storage temperature and the stability of the protein itself. Generally, the shelf life of liquid form is 6 months at -20°C/-80°C. The shelf life of lyophilized form is 12 months at -20°C/-80°C.
Uniprot No.	P19215
Product Type	Recombinant Protein
Immunogen Species	Spiroplasma citri
Purity	≥ 90% as determined by SDS-PAGE.
Sequence	CNKTESNNLSIVKTIAVPATVATANPKQVTNAEIKTALEANVLKAVQGQVVKTATA ADFQFDVYQDNKGTSLTTINLEEGNVEVYVQITPAKDKTVVIGETGYIKVTLPKI KVDISGVVIDQQIVEIKAADPKQVTKDELNAVNTYATLASAVLEAIKKNKAPNAGA SDFEITNNCDAGDYSAQKDKVTKVTKAKDESPNISGEFKVNAKVKATLAPPKAG
Research Area	Others
Source	E.coli
Target Names	spi
Expression Region	24-241aa
Notes	Repeated freezing and thawing is not recommended. Store working aliquots at 4°C for up to one week.
Tag Info	N-terminal 6xHis-SUMO-tagged
Mol. Weight	39.0kDa
Protein Length	Full Length of Mature Protein

Image



(Tris-Glycine gel) Discontinuous SDS-PAGE (reduced) with 5% enrichment gel and 15% separation gel.

Reconstitution

We recommend that this vial be briefly centrifuged prior to opening to bring the contents to the bottom. Please reconstitute protein in deionized sterile water to a



concentration of 0.1-1.0 mg/mL. We recommend to add 5-50% of glycerol (final concentration) and aliquot for long-term storage at -20°C/-80°C. Our default final concentration of glycerol is 50%. Customers could use it as reference.

Shelf Life

The shelf life is related to many factors, storage state, buffer ingredients, storage temperature and the stability of the protein itself.

Generally, the shelf life of liquid form is 6 months at -20°C/-80°C. The shelf life of lyophilized form is 12 months at -20°C/-80°C.