

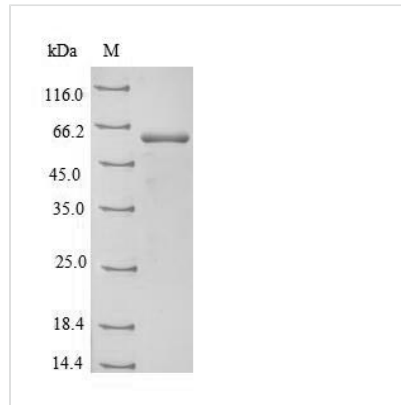


# Recombinant Bovine Aspartate aminotransferase, mitochondrial (GOT2)

<b>Product Code</b>	CSB-EP009681BO
<b>Relevance</b>	Catalyzes the irreversible transamination of the L-tryptophan metabolite L-kynurenine to form kynurenic acid (KA). Plays a key role in amino acid metabolism. Important for metabolite exchange between mitochondria and cytosol. Facilitates cellular uptake of long-chain free fatty acids (By similarity).
<b>Abbreviation</b>	Recombinant Bovine GOT2 protein
<b>Storage</b>	The shelf life is related to many factors, storage state, buffer ingredients, storage temperature and the stability of the protein itself. Generally, the shelf life of liquid form is 6 months at -20°C/-80°C. The shelf life of lyophilized form is 12 months at -20°C/-80°C.
<b>Uniprot No.</b>	P12344
<b>Alias</b>	Fatty acid-binding protein Short name: FABP-1 Glutamate oxaloacetate transaminase 2 Kynurenine aminotransferase 4 Kynurenine aminotransferase IV Kynurenine--oxoglutarate transaminase 4 Kynurenine--oxoglutarate transaminase IV Plasma membrane-associated fatty acid-binding protein Short name: FABPpm Transaminase A
<b>Product Type</b>	Recombinant Protein
<b>Immunogen Species</b>	Bos taurus (Bovine)
<b>Purity</b>	≥ 90% as determined by SDS-PAGE.
<b>Sequence</b>	GLAAAASARASSWWAHVEMGPPDPILGVTEAFKRDTNSKKNLGVGAYRDD NGKPYVLPSVRKAEAQIAAKNLDKEYLPIAGLAEFCKASAELALGENNEVLKSG RYVTVQTISGTGALRIGASFLQRFFKFSRDVFLPKPTWGNHTPIFRDAGMQLQ SYRYDDPKTCGFDFGTGAIEDISKIPAQSVILLHACAHNPTGVDPRPEQWKEMAT VVKNNLFAFFDMAYQGFASGDGNKDAWAVRHFIEQGINVCLCQSYAKNMGL YGERVGAFTVVCKDAEEAKRVESQLKILIRPMYSNPPINGARIASTILTSPDLRK QWLHEVKGMADRIISMRTQLVSNLKEGSSHNWQHIIDQIGMFCYTGLKPEQV ERLTKEFSIYMTKDGRISVAGVTSGNVAYLAHAIHQVTK
<b>Research Area</b>	Metabolism
<b>Source</b>	E.coli
<b>Target Names</b>	GOT2
<b>Expression Region</b>	20-430aa
<b>Notes</b>	Repeated freezing and thawing is not recommended. Store working aliquots at 4°C for up to one week.
<b>Tag Info</b>	N-terminal 6xHis-SUMO-tagged
<b>Mol. Weight</b>	61.5kDa
<b>Protein Length</b>	Full Length of Mature Protein



## Image



(Tris-Glycine gel) Discontinuous SDS-PAGE (reduced) with 5% enrichment gel and 15% separation gel.

## Reconstitution

We recommend that this vial be briefly centrifuged prior to opening to bring the contents to the bottom. Please reconstitute protein in deionized sterile water to a concentration of 0.1-1.0 mg/mL. We recommend to add 5-50% of glycerol (final concentration) and aliquot for long-term storage at -20°C/-80°C. Our default final concentration of glycerol is 50%. Customers could use it as reference.

## Shelf Life

The shelf life is related to many factors, storage state, buffer ingredients, storage temperature and the stability of the protein itself.

Generally, the shelf life of liquid form is 6 months at -20°C/-80°C. The shelf life of lyophilized form is 12 months at -20°C/-80°C.