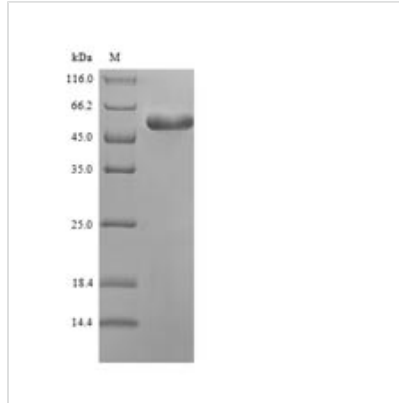




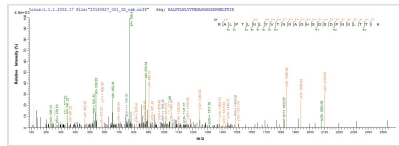
Recombinant Mycoplasma pneumoniae Putative proline iminopeptidase (pip)

Product Code	CSB-EP305049MLW
Relevance	Specifically catalyzes the removal of N-terminal proline residues from peptides.
Abbreviation	Recombinant Mycoplasma pneumoniae pip protein
Storage	The shelf life is related to many factors, storage state, buffer ingredients, storage temperature and the stability of the protein itself. Generally, the shelf life of liquid form is 6 months at -20°C/-80°C. The shelf life of lyophilized form is 12 months at -20°C/-80°C.
Uniprot No.	P75092
Alias	Prolyl aminopeptidase Short name: PAP
Product Type	Recombinant Protein
Immunogen Species	Mycoplasma pneumoniae (strain ATCC 29342 / M129)
Purity	≥ 90% as determined by SDS-PAGE.
Sequence	MNTSPKQSGYLKVGNGHEVYFWTAGNPQGKSALYVHGGPGSGTDAGCLKYF DLDTTYVILLDQRGCGQSKAVNPLLHNTTQDLVGDLEALRQHLKLERWTLFGG SWGSTLALVYAITHPQVVEQVFLRALFLGREQDWAEMLLGLGKLFYPYEHQTL LKAIPQACRTDFTKFTNYFYEV LQGND SALKTQLANAWVKWENTLLSPISYVK DEKAEDANFTFKLALLECHYAKHHSFLKPNFILENVAVLKDKPVHLIHGRFDLV CPLSQALELKRALPTLNLYVTNNAGHSGSDPNNLTTIKHLLKTQL
Research Area	Microbiology
Source	E.coli
Target Names	pip
Expression Region	1-309aa
Notes	Repeated freezing and thawing is not recommended. Store working aliquots at 4°C for up to one week.
Tag Info	N-terminal 6xHis-SUMO-tagged
Mol. Weight	50.7kDa
Protein Length	Full Length

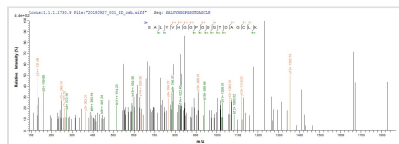
Image



(Tris-Glycine gel) Discontinuous SDS-PAGE (reduced) with 5% enrichment gel and 15% separation gel.



Based on the SEQUEST from database of E.coli host and target protein, the LC-MS/MS Analysis result of CSB-EP305049MLW could indicate that this peptide derived from E.coli-expressed Mycoplasma pneumoniae (strain ATCC 29342 / M129) pip.



Based on the SEQUEST from database of E.coli host and target protein, the LC-MS/MS Analysis result of CSB-EP305049MLW could indicate that this peptide derived from E.coli-expressed Mycoplasma pneumoniae (strain ATCC 29342 / M129) pip.

Reconstitution

We recommend that this vial be briefly centrifuged prior to opening to bring the contents to the bottom. Please reconstitute protein in deionized sterile water to a concentration of 0.1-1.0 mg/mL. We recommend to add 5-50% of glycerol (final concentration) and aliquot for long-term storage at -20°C/-80°C. Our default final concentration of glycerol is 50%. Customers could use it as reference.

Shelf Life

The shelf life is related to many factors, storage state, buffer ingredients, storage temperature and the stability of the protein itself.

Generally, the shelf life of liquid form is 6 months at -20°C/-80°C. The shelf life of lyophilized form is 12 months at -20°C/-80°C.