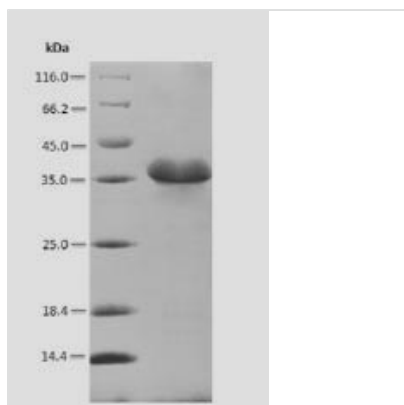




Recombinant Glycine max Cell division cycle protein 48 homolog (CDC48), partial

Product Code	CSB-EP346583GGV
Relevance	Probably functions in cell division and growth processes.
Abbreviation	Recombinant Glycine max CDC48 protein, partial
Storage	The shelf life is related to many factors, storage state, buffer ingredients, storage temperature and the stability of the protein itself. Generally, the shelf life of liquid form is 6 months at -20°C/-80°C. The shelf life of lyophilized form is 12 months at -20°C/-80°C.
Uniprot No.	P54774
Alias	Valosin-containing protein homolog Short name: VCP
Product Type	Recombinant Protein
Immunogen Species	Glycine max (Soybean) (Glycine hispida)
Purity	Greater than 90% as determined by SDS-PAGE.
Sequence	DEDSRHQIFKACLRLKSPIAKNVDLRALARHTQGFGADITEICQRACKYAIRENI EKDIERERKSRENPEAMDEDTVDDAEVIAEIKAAHFEEISMKFARRSVSDADIRKY QAFAQTLQQSRGFGSEFRFPESGDRTTTGSDPFAASAGGADEDDLYS
Research Area	Neuroscience
Source	E.coli
Target Names	CDC48
Expression Region	653-807aa
Notes	Repeated freezing and thawing is not recommended. Store working aliquots at 4°C for up to one week.
Tag Info	N-terminal 6xHis-SUMO-tagged
Mol. Weight	33.5kDa
Protein Length	Partial

Image



(Tris-Glycine gel) Discontinuous SDS-PAGE (reduced) with 5% enrichment gel and 15% separation gel.



Reconstitution

We recommend that this vial be briefly centrifuged prior to opening to bring the contents to the bottom. Please reconstitute protein in deionized sterile water to a concentration of 0.1-1.0 mg/mL. We recommend to add 5-50% of glycerol (final concentration) and aliquot for long-term storage at -20°C/-80°C. Our default final concentration of glycerol is 50%. Customers could use it as reference.

Shelf Life

The shelf life is related to many factors, storage state, buffer ingredients, storage temperature and the stability of the protein itself.

Generally, the shelf life of liquid form is 6 months at -20°C/-80°C. The shelf life of lyophilized form is 12 months at -20°C/-80°C.