

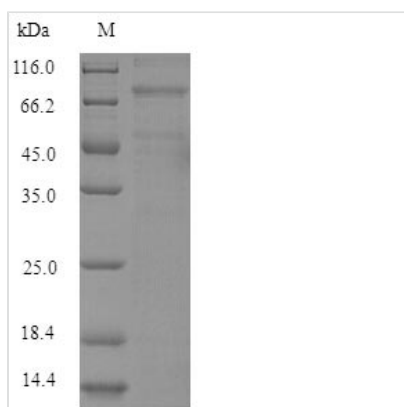


Recombinant Mouse Lysyl oxidase homolog 4 (Loxl4)

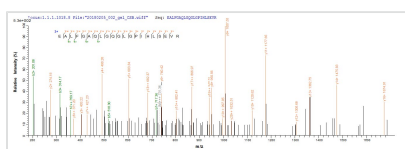
Product Code	CSB-EP846069MO
Relevance	May modulate the formation of a collagenous Extracellular domain matrix.
Abbreviation	Recombinant Mouse Loxl4 protein
Storage	The shelf life is related to many factors, storage state, buffer ingredients, storage temperature and the stability of the protein itself. Generally, the shelf life of liquid form is 6 months at -20°C/-80°C. The shelf life of lyophilized form is 12 months at -20°C/-80°C.
Uniprot No.	Q924C6
Alias	Lysyl oxidase-like protein 4 Lysyl oxidase-related protein C
Product Type	Recombinant Protein
Immunogen Species	Mus musculus (Mouse)
Purity	Greater than 90% as determined by SDS-PAGE.
Sequence	<p>QSSGTTKLRLVGPTDRPEEGRLEVLHQQWQWGTVCDDDFALQEATVACRQLG FESALTWAHSAKYGQGEGPIWLDNVRCLGTEKTLDQCGSNGWGVSDCRHSE DVGVVCHPRRQHGYPHSEKVSNALGPQGRRLLEEVRLLKPIASAKRHSPVTEGA VEVRYDGHWRQVCDQGWMTMNSRVVCGMLGFPSQTSVNSHYRKYVWNLK MKDPKSRLNSLTKKNSFWIHRVDCLGTEPHLAKCQVQVAPGRGKLRPACPGG MHAVVSCVAGPHFRRQKPKPTRKESHAEELKVRLRSGAQVGEGRVEVLMNR QWGTVCDHRWNLISASVVCRLGFGSAREALFGAQLGQGLGPIHLSEVRCR GYERTLGDCLEGSQNGCQHANDA AVR CNIPDMGFQNKVRLAGGRNSEEG VVEVQVEVNGVPRWGTVCSDHWGLTEAMVTCRQLGLGFANFALKD TWYWQ GTPEAKEVVMMSGVRCSGTEMALQQCQRHGPVHCSHGPGFRFSAGVACMNSA PDLVMNAQLVQETAYLED RPLSMLYCAHEENCLSKSADHMDWPYGYRLLRF SSQIYNLGRADFRPKAGRHSWIWHQCHRHYHSIEVFTHYDLLTLNGSKVAEG HKASFCELTNCP SGVQRRYACANFGEQGVAVGCWDTYRHDIDCQWVDITD VGPGDYIFQVVVNPTNDVAESDFSNMIRCRCKYDGQRVWLHNCHTGD SYR ANAELSLEQEQLRNNLI</p>
Research Area	Signal Transduction
Source	E.coli
Target Names	Loxl4
Expression Region	26-757aa
Notes	Repeated freezing and thawing is not recommended. Store working aliquots at 4°C for up to one week.
Tag Info	N-terminal 6xHis-tagged
Mol. Weight	85.9kDa
Protein Length	Full Length of Mature Protein



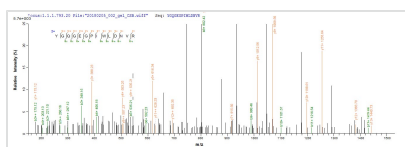
Image



(Tris-Glycine gel) Discontinuous SDS-PAGE (reduced) with 5% enrichment gel and 15% separation gel.



Based on the SEQUEST from database of E.coli host and target protein, the LC-MS/MS Analysis result of CSB-EP846069MO could indicate that this peptide derived from E.coli-expressed Mus musculus (Mouse) Loxl4.



Based on the SEQUEST from database of E.coli host and target protein, the LC-MS/MS Analysis result of CSB-EP846069MO could indicate that this peptide derived from E.coli-expressed Mus musculus (Mouse) Loxl4.

Reconstitution

We recommend that this vial be briefly centrifuged prior to opening to bring the contents to the bottom. Please reconstitute protein in deionized sterile water to a concentration of 0.1-1.0 mg/mL. We recommend to add 5-50% of glycerol (final concentration) and aliquot for long-term storage at -20°C/-80°C. Our default final concentration of glycerol is 50%. Customers could use it as reference.

Shelf Life

The shelf life is related to many factors, storage state, buffer ingredients, storage temperature and the stability of the protein itself.

Generally, the shelf life of liquid form is 6 months at -20°C/-80°C. The shelf life of lyophilized form is 12 months at -20°C/-80°C.