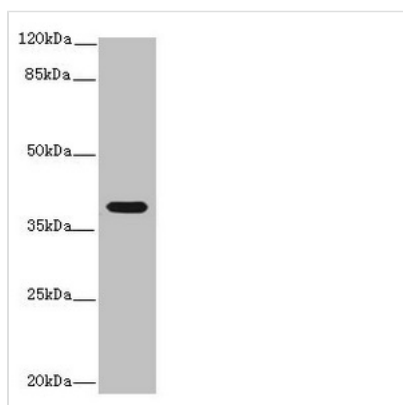




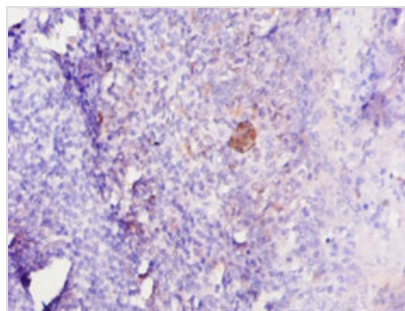
# IL12B Antibody

|                            |  |
|----------------------------|--|
| <b>Product Code</b>        | CSB-PA011587YA01SH   |
| <b>Storage</b>             | Upon receipt, store at -20°C or -80°C. Avoid repeated freeze.  |
| <b>Uniprot No.</b>         | P68220   |
| <b>Immunogen</b>           | Recombinant Sheep Interleukin-12 subunit beta protein (23-327AA)   |
| <b>Raised In</b>           | Rabbit   |
| <b>Species Reactivity</b>  | Sheep  |
| <b>Tested Applications</b> | ELISA, WB, IHC; Recommended dilution: WB:1:500-1:2000, IHC:1:20-1:200  |
| <b>Form</b>                | Liquid   |
| <b>Conjugate</b>           | Non-conjugated   |
| <b>Storage Buffer</b>      | Preservative: 0.03% Proclin 300<br>Constituents: 50% Glycerol, 0.01M PBS, PH 7.4   |
| <b>Purification Method</b> | >95%, Protein G purified   |
| <b>Isotype</b>             | IgG  |
| <b>Clonality</b>           | Polyclonal   |
| <b>Alias</b>               | Interleukin-12 subunit beta (IL-12B) (Cytotoxic lymphocyte maturation factor 40 kDa subunit) (CLMF p40) (IL-12 subunit p40), IL12B |
| <b>Immunogen Species</b>   | Ovis aries (Sheep)   |
| <b>Research Area</b>       | Immunology   |
| <b>Target Names</b>        | IL12B  |

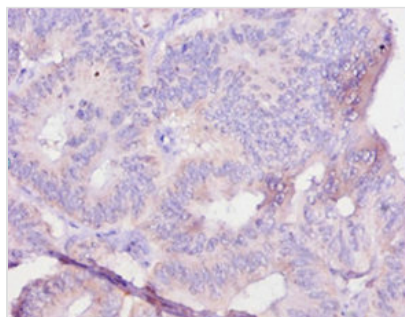
## Image



Western blot  
All lanes: Interleukin-12 subunit beta antibody at 14µg/ml + K562 whole cell lysate  
Secondary  
Goat polyclonal to rabbit IgG at 1/10000 dilution  
Predicted band size: 37 kDa  
Observed band size: 37 kDa



Immunohistochemistry of paraffin-embedded human tonsil tissue using CSB-PA011587YA01SH at dilution of 1:10



Immunohistochemistry of paraffin-embedded human colon cancer using CSB-PA011587YA01SH at dilution of 1:10