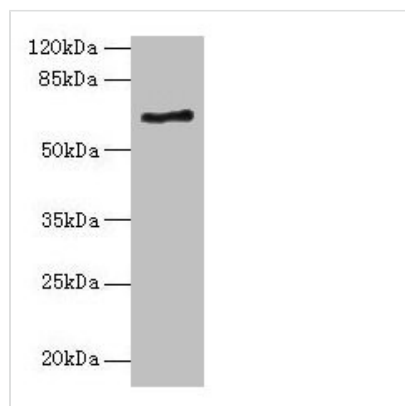




# ALAS2 Antibody

<b>Product Code</b>	CSB-PA001560LA01HU
<b>Storage</b>	Upon receipt, store at -20°C or -80°C. Avoid repeated freeze.
<b>Uniprot No.</b>	P22557
<b>Immunogen</b>	Recombinant Human 5-aminolevulinate synthase, erythroid-specific, mitochondrial protein (50-587AA)
<b>Raised In</b>	Rabbit
<b>Species Reactivity</b>	Human
<b>Tested Applications</b>	ELISA, WB, IHC; Recommended dilution: WB:1:1000-1:5000, IHC:1:20-1:200
<b>Form</b>	Liquid
<b>Conjugate</b>	Non-conjugated
<b>Storage Buffer</b>	Preservative: 0.03% Proclin 300 Constituents: 50% Glycerol, 0.01M PBS, PH 7.4
<b>Purification Method</b>	>95%, Protein G purified
<b>Isotype</b>	IgG
<b>Clonality</b>	Polyclonal
<b>Alias</b>	5-aminolevulinate synthase, erythroid-specific, mitochondrial (ALAS-E) (EC 2.3.1.37) (5-aminolevulinic acid synthase 2) (Delta-ALA synthase 2) (Delta-aminolevulinate synthase 2), ALAS2, ALASE ASB
<b>Immunogen Species</b>	Homo sapiens (Human)
<b>Research Area</b>	Others
<b>Target Names</b>	ALAS2

## Image



### Western blot

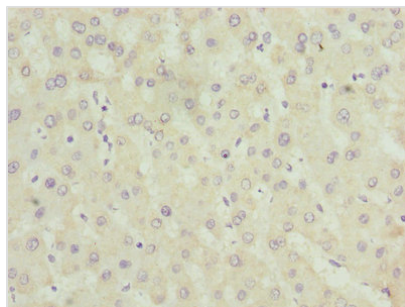
All lanes: ALAS2 antibody at 6µg/ml + K562 whole cell lysate

### Secondary

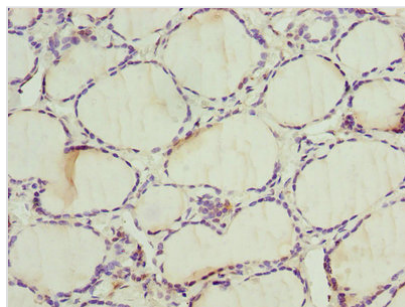
Goat polyclonal to rabbit IgG at 1/10000 dilution

Predicted band size: 65, 61, 50, 64 kDa

Observed band size: 65 kDa



Immunohistochemistry of paraffin-embedded human liver tissue using CSB-PA001560LA01HU at dilution of 1:100



Immunohistochemistry of paraffin-embedded human thyroid tissue using CSB-PA001560LA01HU at dilution of 1:100

## Usage

For Research Use Only. Not for use in diagnostic or therapeutic procedures.